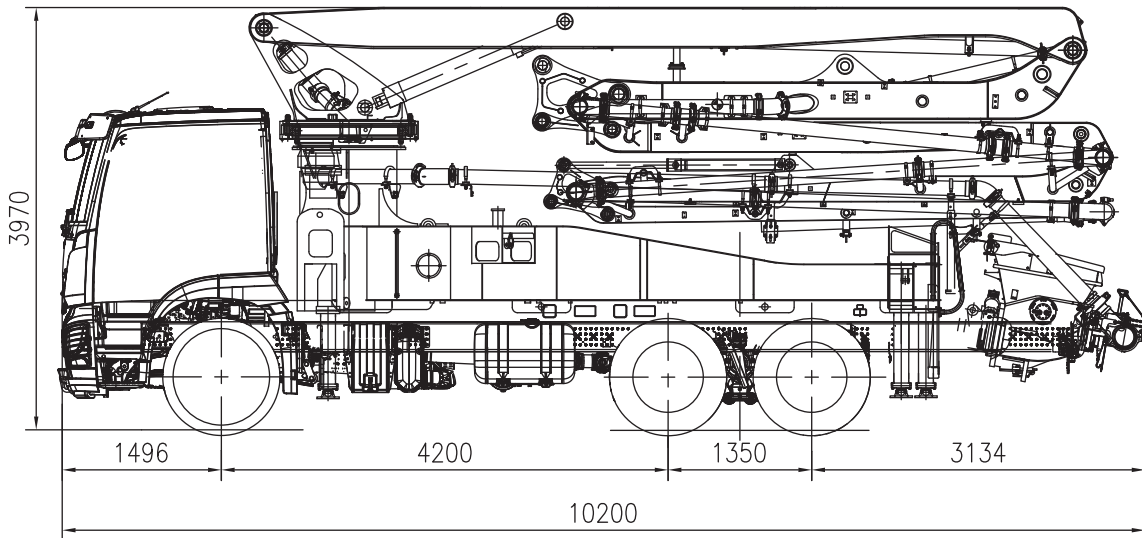


TRUCK MOUNTED CONCRETE PUMP EU-S 32X-5Z (H leg)



Note: Standard version. Dimensions and weights depend on truck, pump model and equipment.
Dimensions in mm. Example based on Mercedes-Benz Arocs 5 2643.
For illustration only. Actual products may vary.

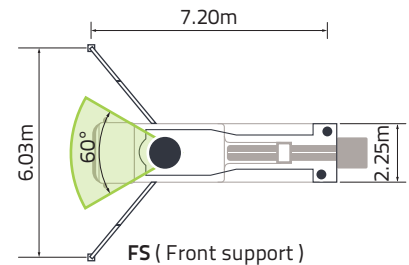
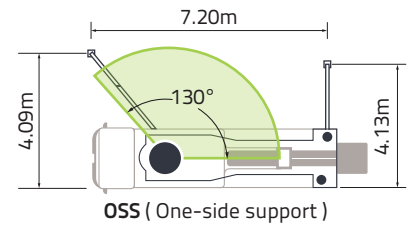
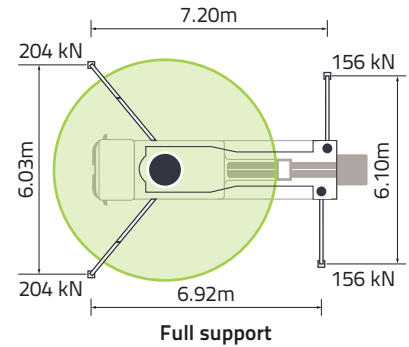
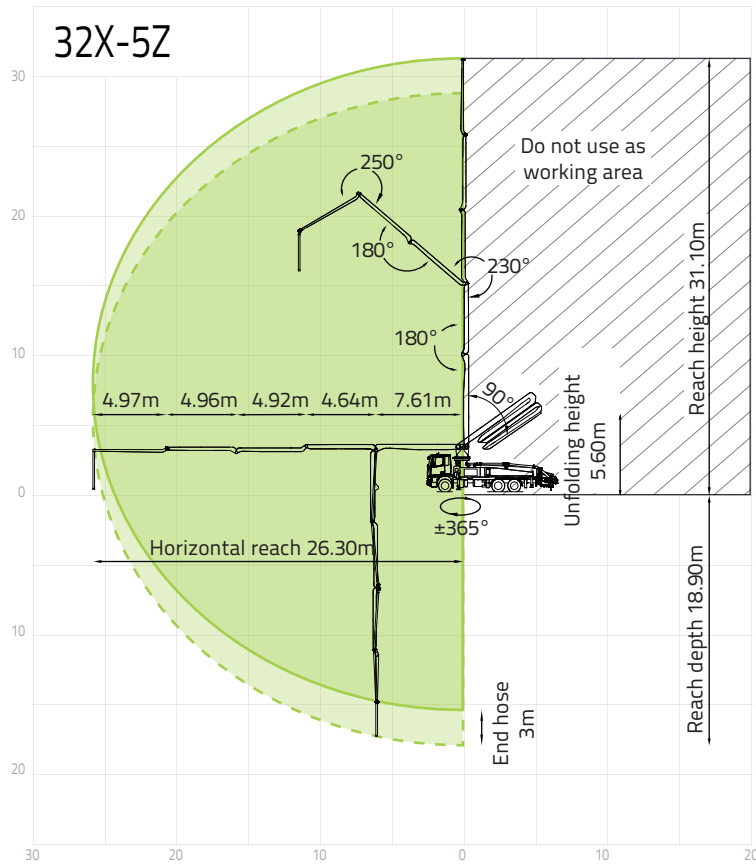
Technical Specifications

BOOM		UNIT	
Reach height	m		31.10
Horizontal reach (gross/net)	m		26.30 / 23.30
Reach depth	m		18.90
Unfolding height	m		5.60
Sections	/		5
Folding system	/		Z
End hose length	m		3
Delivery line	mm		DN 125
PUMP			
Max. output	m ³ /h		170
Max. pressure	bar		85
Delivery cylinder	mm		Φ 260
Stroke	mm		1800

*All data are maximum theoretical values.

This product is currently in the design phase, parameters and configurations may change when the final design is completed.

Reach information diagram, support



Configurations (Optional★)

Pumping System

- APC (Accurate Pumping Control)
- CPC (Condition-adaptive Pumping Control)
- ECO (Eco. Pumping)
- Synchronized dual-concrete piston retraction

Hopper

- Streamline hopper
- Compressed air for oil sprayer
- Aluminium alloy hopper cover
- Bar-type grille
- Hopper vibrator
- Cleaning ball stopper
- Chrome-plated concrete cylinder
- Wear-resistant S pipe
- Carbide wear plate
- Labour-saving device for hopper cover
- Quick-release concrete piston
- Automatic forward/reverse agitator rotation
- S-valve swinging speed control

Cleaning

- Water tank, 700L
- Water pump, 70L/min, 15bar
- Water pump, 15L/min, 150bar
- Hose reel for low pressure water pump, 10m
- Hose reel for high pressure water pump, 20m
- Quick-connect water inlet

Support

SSM (Standard Support Mode)(Full Support/OSS/FS/LF/RF)

Placing Boom

iMMC (intelligent Multi-arm Motion Control)

Delivery Line

- Self-locking end hose clamp
- Snap pipe coupling
- End hose, 3m, DN 125
- Double-layer pipes

Lighting

- Boom tip light, LED
- Boom light, LED
- Hopper light, LED
- Rear hopper light, LED
- Baseframe access light, LED
- Support area spotlight, LED
- Support indicator light, LED
- Outrigger indicator light, LED
- Pumping warning light, LED
- Slewing warning light, LED
- Stop light, LED
- Height-marker lamp, LED
- Side-marker lamp, LED

Safety

- 360° surround camera system
- OGS (Outriggers Guidance System)
- LBS (Lock Boom System)
- Emergency pumping reverse
- Emergency hydraulic power interface for boom and outrigger
- End hose squeeze valve, operable by remote control

Digital Management

ZOOMLINK APP

Operation and Maintenance

- Spacious platform for service access
- Central grease lubrication system
- Mushroom button for horn
- Dual radio remote controls
- Remote engine off
- Remote engine start
- OTA (Over-the-Air Update)
- Self-diagnosis and monitoring

ZOOMLION Heavy Industry Science & Technology Co.,Ltd.

Zoomlion Smart City Headquarters Building, No.613 Naqiu Road, Wangcheng District, Changsha, Hunan, China

Copyright © ZOOMLION 2024. All rights reserved. No part of the materials provided may be reproduced or copied in any form, or used for any purpose without prior permission from ZOOMLION.

en.zoomlion.com

