

ZOOMLION

ZOOMLION
Mobile Cranes

Catalogue

European Union



ZOOMLION Smart City

Mobile Crane Park

1,000,000 m²
site area

17,000 sets
Annual production of crane

18 mins
for one crane production

40+items
Industry-pioneering technologies

300+ items
Patent granted

500+ sets
Industrial robot

The Zoomlion Smart City Mobile Crane Park covers an area of approximately 1,000,000m², with an annual production of crane over than 17000 sets. It can produce a full range of crane products from truck cranes, all-terrain cranes, and rough-terrain cranes. One crane can be rolled off the production line every 18 minutes. The output value per unit area and per capita output value both reach the peak of the industry.

This park has 56 highly flexible intelligent production lines and 4 unmanned "dark factory" production areas. More than 500 robots are configured. The main structural parts are all automatically manufactured by robots.



AMR + PTL sorting



Overhead transport of eight large items



Environmentally friendly painting



AMR + PTL sorting



Automatic tyre mounting



Intelligent Manufacturing Platform

The park uses intelligent three-dimensional warehouses for storage. The large structural parts are automatically conveyed by air logistics. The whole production process has 100% automatic logistics distribution. The production data is 100% fully traceable throughout the process. The product quality pass rate is 100%.

Through the extreme integration of technologies such as AI and intelligent equipment, intelligent logistics and digital systems, this park has made breakthroughs in over 40 key technologies in the industry, declaring a total of more than 300 patents. The park is a lighthouse factory in the intelligent manufacturing industry of construction cranes with a high degree of intelligence, internationalization and ecologicalization.



Mobile Crane Catalogue

Contents



Superstructure

ZTF250V42 6

ZTF320V42T 7



All Terrain Crane

ZAT600E 9

ZAT1200E 11

ZAT1600E 13

ZAT2500E 15



Rough Terrain Crane

ZRT400V452-1E 17

ZRT500V452E 19

ZRT600V552-1 21

ZRT700V552-1E 23

ZRT900V552-1 25

ZRT1100V552 27

ZRT1300V552 29



Telescopic Boom
Crawler Crane

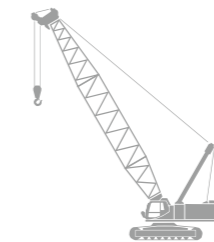
ZCT600V552 31

ZCT1000V552.1 33

ZCT1000A553 35

ZCT1000V502EV 37

ZCT1500A653 39



Crawler Crane

ZCC850V-1E5 41

ZCC1000V-1E5 43

ZCC1500AE5 45

ZCC2200AE5 47

ZCC2800AE5 49

ZCC3500V-2E5 51

ZCC4000VE5 53

ZCC7200E5 55



Loader Crane

ZLK4200V603S 57

ZLK5200V803-2S 59

ZLK6200V803-2S 61

ZLK7600V803-2S 63

ZLK8200V803-1S 65

ZLK6200V803-SA61 67

ZLK7600V803-SA61 69

ZOOMLION

Superstructure

ZTF Series

ZTF250V42  25t  32.5m

ZTF320V42T  32t  33m



Superstructure

ZTF250V42



32.5m



25t

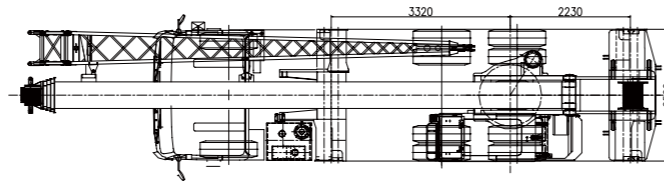
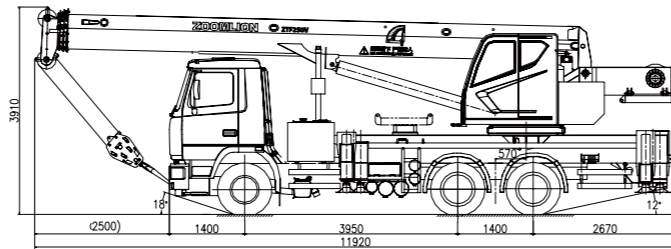
Max. lifting moment with basic boom	Max. lifting moment with fully extended boom	Max. driving speed	Max. gradeability
892 kN·m	549 kN·m	70 km/h	40%

Technical Advantages

- 4-section 32.5m main boom, with 892kN·m max. lifting moment of basic boom, 549kN·m max. lifting moment of fully extended main boom, 6.5t lifting capacity when fully extended.
- Standard 8m mechanical jib, with 0° and 30° jib offset, with a maximum lifting height of 41.5m.
- MAZ universal chassis platform, 8t standard axle load, compliant with road traffic regulations.
- 40% max. gradeability, 6x6 or 6x4 drive type, offering robust power.
- The rotary load-sensing system employs a high-pressure automatic variable displacement motor for hoisting, achieving an optimal balance among working speed, operational smoothness, and micro-motion precision.
- Green and eco-friendly coating, a brand-new cabs design, and ergonomic details come together in the panoramic wide-body cab to deliver a convenient and safe operating experience.

Dimensions

Unit: mm



Rated Capacity Chart

Unit: t

Reach (m)	10.0	13.0	15.0	17.0	19.0	21.0	23.0	25.0	27.0	29.0	31.0	32.5	Reach (m)
3	25.0	20.5	20.5	20.5	19.0								3
3.5	25.0	20.5	20.5	20.0	18.0	16.5							3.5
4	22.0	20.5	20.5	19.5	17.0	15.5	14.0						4
4.5	20.0	19.0	19.0	18.5	16.0	14.7	13.0	12.0					4.5
5	18.2	17.5	17.5	17.5	15.5	13.9	12.5	11.5	10.5				5
5.5	16.0	16.0	16.0	16.0	14.5	13.2	12.0	11.0	10.0	9.0			5.5
6	14.5	14.5	14.5	14.5	14.0	12.6	11.5	10.5	9.5	8.7	7.5		6
6.5	13.2	13.2	13.2	13.2	13.2	12.0	11.0	10.0	9.1	8.4	7.3	6.5	6.5
7	12.0	12.0	12.0	12.0	12.0	11.5	10.5	9.5	8.7	8.1	7.1	6.4	7
7.5	11.0	11.0	11.0	11.0	11.0	11.0	10.0	9.0	8.3	7.8	6.9	6.3	7.5
8		10.2	10.2	10.2	10.2	10.4	9.5	8.6	7.9	7.4	6.7	6.2	8
9		8.9	8.9	8.9	8.9	9.1	8.6	7.8	7.1	6.7	6.3	5.8	9
10		7.7	7.7	7.8	7.8	8.0	7.9	7.1	6.5	6.1	5.7	5.4	10
11			6.7	6.8	7.0	7.1	7.1	6.5	6.0	5.6	5.2	5.0	11
12			5.9	6.0	6.2	6.3	6.3	6.0	5.5	5.2	4.8	4.6	12
13				5.4	5.5	5.6	5.6	5.1	4.8	4.5	4.3	4.3	13
14				4.8	4.8	4.9	5.0	4.8	4.5	4.1	4.0	4.0	14
15				4.2	4.2	4.3	4.4	4.4	4.2	3.8	3.7	3.7	15
16					3.8	3.8	3.9	3.9	3.9	3.5	3.4	3.4	16
17						3.4	3.4	3.4	3.5	3.6	3.3	3.2	17
18							3.1	3.1	3.2	3.2	3.1	3.0	18
19								2.8	2.8	2.9	2.9	2.8	19
20									2.5	2.5	2.6	2.6	20
21										2.2	2.3	2.4	21
22											2.1	2.2	22
23												2.0	23
24													24
25													25
26													26
27													27
28													28
29													29
30													30

Superstructure

ZTF320V42T



33m



32t

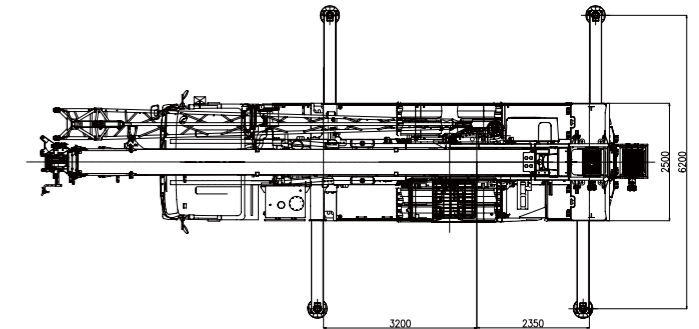
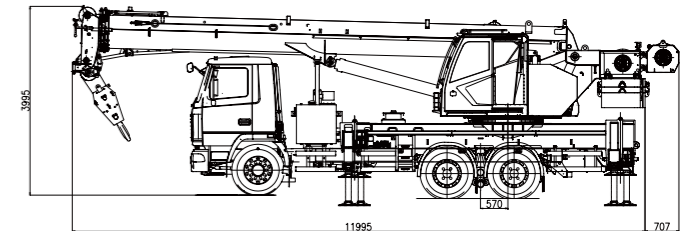
Max. lifting moment with basic boom	Max. lifting moment with fully extended boom	Max. driving speed	Max. gradeability
1019 kN·m	551 kN·m	70 km/h	40%

Technical Advantages

- 4-section 33m main boom, with 1019kN·m max. lifting moment of basic boom, 551kN·m max. lifting moment of fully extended main boom, 7t lifting capacity when fully extended.
- Optional 8.5m mechanical jib, with 0° ,15° and 30° jib offset, with a maximum lifting height of 41.5m.
- MAZ universal chassis platform, 8t standard axle load, compliant with road traffic regulations.
- 70km/h maximum driving speed, 40% max. gradeability, 6x4 drive type, offering robust power.
- Open-type variable pump system has a maximum hoisting speed of 125 m/min, high volumetric efficiency, energy saving and fuel economy.
- Multi-function touchscreen LMI, equipped with standard multiple safety measures for safe and reliable operation.
- The wide-body operator's cab features 0-20° tilt range , ergonomic details deliver a comfortable operating experience.

Dimensions

Unit: mm



Rated Capacity Chart

Unit: t

Reach (m)	10.2	14.7	19.2	23.7	28.2	33	Reach (m)
3	32	19.5					3
3.5	28.6	19.5	17.6				3.5
4	26	19.5	16.8	13.5			4
4.5	22.7	19	16.2	12.8			4.5
5	20	19	15.6	12.1	9.8		5
5.5	17.9	18.1	14.9	11.5	9.4		5.5
6	16	16.3	14.2	11	9		6
6.5	14.6	14.8	13.6	10.5	8.6	7	6.5
7	13.3	13.5	13	10	8.2	7	7
8	10.2	11.5	11.6	9.2	7.6	6.5	8
9		9.9	10.1	8.4	6.9	6	9
10		8.7	8.9	7.65	6.3	5.5	10
11		7.7	7.8	7.05	5.8	5.1	11
12		6.6	6.9	6.55	5.35	4.65	12
13			6	6.05	4.95	4.3	13
14			5.3	5.45	4.6	4	14
15			4.65	4.85	4.35	3.75	15
16			4.1	4.3	4.05	3.5	16
18				3.45	3.55	3.05	18
20					2.95	2.7	20
22						2.4	22
24							24
26							26
28							28
30							30

ZOOMLION

All Terrain Crane

 48.0m  60t

ZAT600E

Max. lifting moment with basic boom	Max. lifting moment with fully extended boom	Max. driving speed	Max. gradeability
1870 kN·m	980kN·m	80 km/h	68%

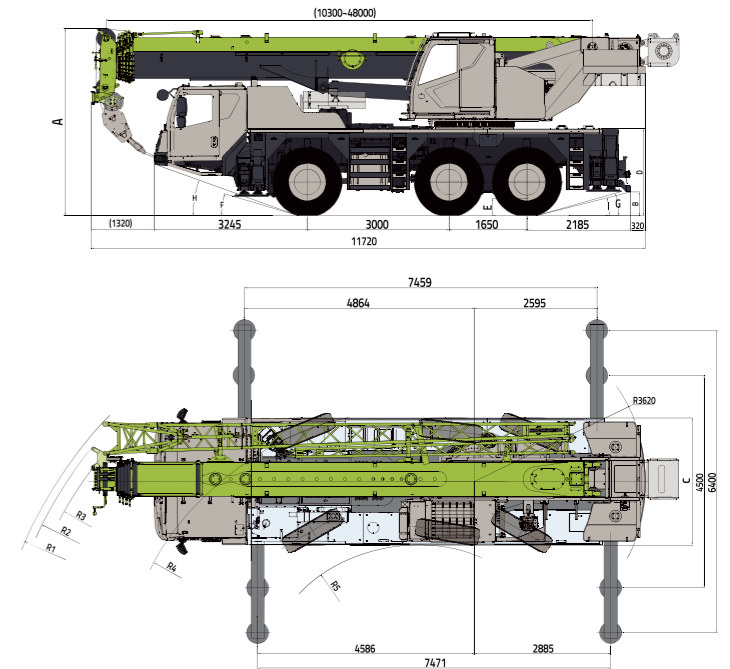


Technical Advantages

- 6-section 48m main boom, with 8t maximum lifting capacity of fully extended main boom, with 40m working radius, covering a wide operation range.
- Benz OM470LA engine + Allison transmission, 6 x 6 x 6 all-wheel drive chassis, with 6 steering modes.
- Equipped with the self-disassembly counterweight, eliminates the need for a forklift or auxiliary crane, capable of transporting with 13t full counterweight.
- Equipped with high integrated remote control technology, a 360° panoramic view system, and boom anti-sway functionality.
- Zoomlion's independently developed new driver's cab, equipped with airsuspended seats, electric combination rearview mirrors, 15.6-inch central control screen, connected Intelligent cabin.
- Spacious operator's cab, features a 0-20° tilt-capable design, it expands the field of vision and lowers operational complexity.

Dimensions

Unit: mm



⊙	A (mm)	B (mm)	C (mm)	D (mm)	E (mm)	F(°)	G(°)	H(°)	I(°)	R1 (mm)	R2 (mm)	R3 (mm)	R4 (mm)	R5 (mm)
385/95R25	3830	440	2550	1765	310	14	14	18	12	9145	8980	8695	6500	3640
445/95R25	3880	490	2550	1815	360	16	15	19	14	10240	10030	9725	7800	5095

Rated Capacity Chart

Unit: t



⚡	10.3	10.3	13.8	17.3	20.8	24.3	27.8	31.3	34.8	38.3	41.8	45.3	48	⚡
2.1	60.0													2.1
2.4	58.8													2.4
2.5	58.2													2.5
3.0	54.6	43.0	42.5	41.0	36.0	32.0								3.0
3.5	50.0	43.0	42.3	40.7	35.5	32.0	25.0							3.5
4.0	45.0	40.8	40.5	38.5	35.0	32.0	25.0	20.0						4.0
4.5	41.0	37.7	37.5	35.5	34.0	31.0	25.0	20.0						4.5
5.0	37.0	35.3	35.0	33.2	32.0	30.0	25.0	20.0	16.0					5.0
6.0	31.8	29.8	29.8	29.6	28.5	27.0	23.2	20.0	16.0	15.0				6.0
7.0	26.5	24.5	24.7	25.2	25.5	24.5	21.3	19.2	16.0	14.5	11.0			7.0
8.0			21.7	22.0	22.5	22.5	19.7	17.6	15.5	13.5	11.0	9.0		8.0
9.0			19.0	18.8	19.0	19.5	18.0	16.2	14.4	12.7	10.6	9.0	8.0	9.0
10			15.8	15.7	16.1	16.5	16.5	15.0	13.4	11.9	10.2	8.6	8.0	10
11				13.4	13.8	14.2	12.5	13.8	12.4	11.1	9.7	8.2	7.7	11
12				11.5	12.0	12.3	11.0	12.2	11.5	10.3	9.1	7.7	7.4	12
13				10.0	10.4	10.8	9.8	10.5	10.7	9.7	8.6	7.3	7.0	13
14					9.2	9.5	8.7	9.7	9.8	9.0	8.1	7.0	6.6	14
15					8.0	8.6	7.8	8.6	8.7	8.5	7.6	6.8	6.3	15
16					7.1	7.6	6.3	7.7	7.9	7.8	7.2	6.4	6.0	16
18						6.1	5.2	6.2	6.3	6.4	6.4	5.8	5.5	18
20							4.3	5.1	5.2	5.4	5.5	5.2	5.0	20
22								4.2	4.3	4.5	4.6	4.6	4.5	22
24								3.5	3.6	3.7	3.9	3.8	4.1	24
26								2.8	3.0	3.1	3.3	3.3	3.4	26
28									2.5	2.6	2.8	2.8	2.8	28
30									2.0	2.1	2.3	2.4	2.4	30
32										1.8	1.9	2.0	2.0	32
34											1.6	1.6	1.6	34
36											1.3	1.4	1.4	36
38												1.2	1.3	38
40													1.1	40

the rated capacities marked with ★★ are for crane to over the rear working area.



ZOOMLION

All Terrain Crane

ZAT1200E

 66.0m  120t

Max. lifting moment with basic boom

3140 kN·m

Max. lifting moment with fully extended boom

1811 kN·m

Max. driving speed

80 km/h

Max. gradeability

60%

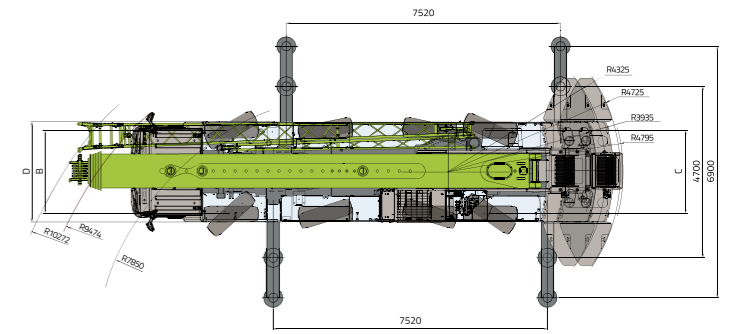
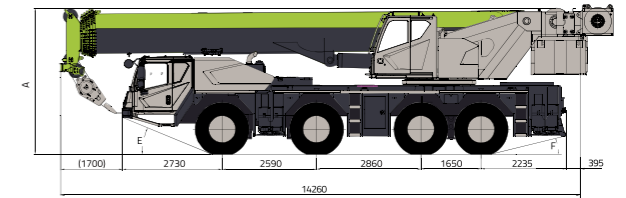


Technical Advantages

- Maximum lifting height of 86m and maximum radius of 60m, covering a wide range of operations.
- 66m fully extended main boom with 9.2 t maximum lifting capacity, and at a maximum radius of 60m, the lifting capacity is 0.8t.
- Benz OM471LA.E5-2 engine + ZF 12 gears automated manual transmission, 3 axles drive, all-axle steering (8x6x8).
- Fully self-disassembly configuration, no forklift or auxiliary crane required, the crane can carry 20.6t counterweight during transportation.
- Equipped with wireless remote control 360° panoramic view system, electromagnetic interference resistance, and a range of intelligent technologies.
- Operator's cab features a tilting mechanism with a 0-20° tilt range, enhancing the field of view and reducing operational difficulty.

Dimensions

Unit: mm



	A(mm)	B(mm)	C(mm)	D(mm)	E(°)	F(°)
385/95R25	3950	2350	2350	2750	21°	12°
445/95R25	4000	2300	2300	2750	22°	14°

Rated Capacity Chart

Unit: t



Lifting Height (m)	Lifting Capacity (t)															Lifting Height (m)
	12.5*	12.5	16.5	20.5	24.5	28.5	32.5	36.5	40.5	44.5	48.5	52.5	56.5	60.5	66.0	
2.5	120.0															2.5
3.0	80.0	80.0	70.0	68.0	65.0											3.0
3.5	73.0	71.0	68.0	65.5	64.0	50.0										3.5
4.0	67.0	65.0	62.5	61.0	59.5	50.0	52.0									4.0
4.5	62.0	60.0	58.5	56.5	55.0	50.0	52.0									4.5
5.0	58.0	55.0	54.5	52.5	51.5	49.5	49.5	42.5								5.0
6.0	51.5	47.0	48.0	46.5	45.0	44.5	44.0	42.0	36.0							6.0
7.0	45.5	41.0	42.0	40.5	40.5	40.0	39.5	39.0	35.0	28.0						7.0
8.0	40.0	36.0	35.6	36.0	36.0	36.2	35.8	36.5	32.0	28.0	24.0					8.0
9.0	34.4	32.0	33.0	32.1	32.0	32.8	32.2	33.5	30.0	27.0	23.0	18.0				9.0
10.0			29.5	28.9	29.8	30.2	29.2	30.0	28.0	25.0	22.5	18.0	15.0			10.0
11.0			26.5	26.0	27.0	27.2	26.7	27.5	25.7	23.5	21.0	18.0	14.5	12.0		11.0
12.0			23.8	23.2	24.0	24.5	24.5	25.0	24.0	22.0	20.0	17.5	14.0	12.0	9.2	12.0
14.0				18.7	19.5	19.8	20.2	21.0	20.4	19.3	17.5	16.0	13.5	11.5	9.1	14.0
16.0				15.0	15.6	16.0	16.7	17.5	17.0	17.0	15.5	14.0	13.0	11.0	9.0	16.0
18.0					13.0	13.5	14.1	14.8	14.5	14.4	14.0	12.8	11.8	10.5	8.8	18.0
20.0					10.9	11.5	12.0	12.7	12.3	12.3	12.4	11.5	10.7	9.6	8.5	20.0
22.0						9.6	10.2	10.9	10.3	10.4	10.5	10.3	9.7	8.9	8.0	22.0
24.0							8.6	9.3	8.8	8.8	8.9	9.1	8.9	8.2	7.5	24.0
26.0								7.3	8.0	7.5	7.5	7.6	7.8	7.6	7.0	26.0
28.0									6.9	6.4	6.5	6.7	7.1	7.0	6.5	28.0
30.0									5.9	5.5	5.4	5.6	5.8	6.1	6.1	30.0
32.0										4.7	4.6	4.8	5.0	5.3	5.6	32.0
34.0										4.0	3.9	4.1	4.3	4.6	4.9	34.0
36.0											3.3	3.4	3.7	4.0	4.4	36.0
38.0											2.8	2.9	3.1	3.4	3.8	38.0
40.0												2.4	2.6	2.9	3.3	40.0
42.0												2.0	2.2	2.5	2.9	42.0
44.0													1.8	2.1	2.4	44.0
46.0													1.5	1.7	2.0	46.0
48.0														1.4	1.7	48.0
50.0														1.1	1.4	50.0
52.0															1.1	52.0

the rated capacities marked with ★★ are for crane to over the rear working area.



ZOOMLION

All Terrain Crane

 65.0m  160t

ZAT1600E

Max. lifting moment with basic boom

5008 kN·m

Max. lifting moment with fully extended boom

3300 kN·m

Max. driving speed

80 km/h

Max. gradeability

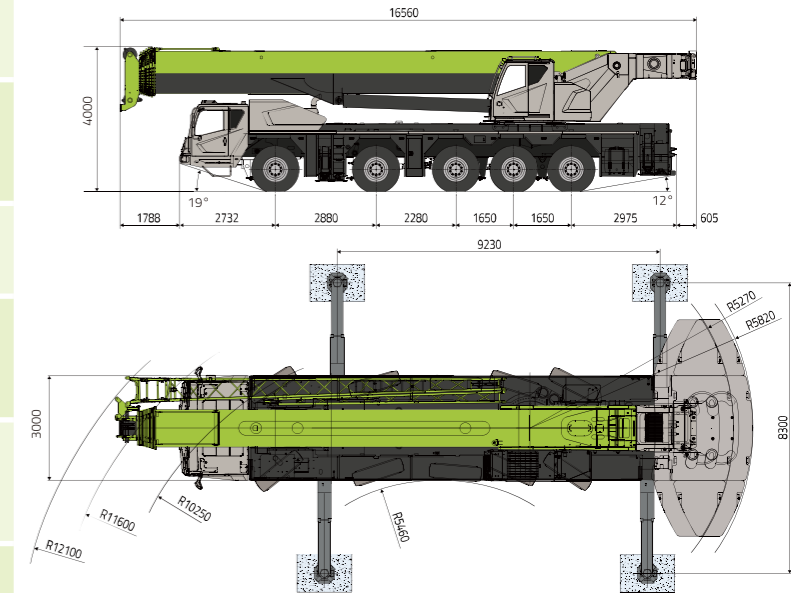
45%

Technical Advantages

- Maximum lifting height of 99.1 m and maximum radius of 74 m, covering a wide range of operations
- 65m fully extended main boom with 15.8 t maximum lifting capacity, and at a maximum radius of 74 m, the lifting capacity is 1 t.
- Benz OM471LA.E5-1 engine + ZF 12 gears automated manual transmission
- Fully self-disassembly configuration, no forklift or auxiliary crane required, the crane can carry 31t counterweight during transportation.
- Equipped with wireless remote control, 360° panoramic view system, electromagnetic interference resistance, and a range of intelligent technologies
- Operator's cab features a tilting mechanism with a 0-20° tilt range, enhancing the field of view and reducing operational difficulty.

Dimensions

Unit: mm



Rated Capacity Chart

Unit: t



Reach (m)	14	18.7	23.4	28.1	32.8	37.5	42.2	46.9	51.6	56.3	61	65	Reach (m)
2.5	160*												2.5
3.0	100	100	93										3.0
3.5	100	100	93										3.5
4.0	100	96	88.7	84									4.0
4.5	96	91	84.2	80									4.5
5.0	90	84	79.2	75	69								5.0
6.0	79	77	70.7	69	64	61							6.0
7.0	70.5	69	65.2	63	58	59							7.0
8.0	62.5	62	59.7	58.1	54	54.5	48						8.0
9.0	55	56.4	54.8	54.1	50	50	44.4	39					9.0
10.0	47	51.3	50.3	49.5	48	47	41.2	36.4	33.1				10.0
12.0		42.3	42.5	42.3	42	41.4	36	32	29.7	25.2			12.0
14.0		33.5	36.2	36.6	36.6	36.7	31.7	28.4	26.4	24	19.4		14.0
16.0			30.5	31.8	32	32.5	28.1	25.5	23.7	21.8	19.4	15.8	16.0
18.0			24.8	27.6	28.4	29	25.2	22.8	21.1	19.9	18.3	15.8	18.0
20.0				23.7	25	25.6	22.8	20.5	19	18	16.8	15.8	20.0
22.0				19.7	21.8	22.7	20.7	18.5	17.1	16.3	15.5	15	22.0
24.0					19.4	20.3	18.9	16.8	15.6	14.8	14.2	13.7	24.0
26.0					16.4	18.2	17.2	15.4	14.2	13.5	13	12.5	26.0
28.0						15.6	15.8	14.1	13	12.3	11.9	11.5	28.0
30.0						13.8	13.4	13	11.9	11.3	11	10.5	30.0
32.0							11.9	12	11	10.4	10.1	9.7	32.0
34.0							10.6	11.1	10.2	9.7	9.4	8.9	34.0
36.0								9.5	9.4	8.9	8.7	8.3	36.0
38.0								8.6	8.7	8.3	8.1	7.7	38.0
40.0									8	7.7	7.5	7.1	40.0
42.0									7.4	7.1	7	6.6	42.0
44.0										6.6	6.5	6.1	44.0
46.0										6.1	6	5.7	46.0
48.0										5.7	5.6	5.3	48.0
50.0											5.2	4.9	50.0
52.0											4.9	4.5	52.0
54.0												4.2	54.0
56.0												3.9	56.0



ZOOMLION

All Terrain Crane

 75.0m  250t

ZAT2500E

Max. lifting moment with basic boom

6762 kN·m

Max. lifting moment with fully extended boom

2842 kN·m

Max. driving speed

80 km/h

Max. gradeability

60%

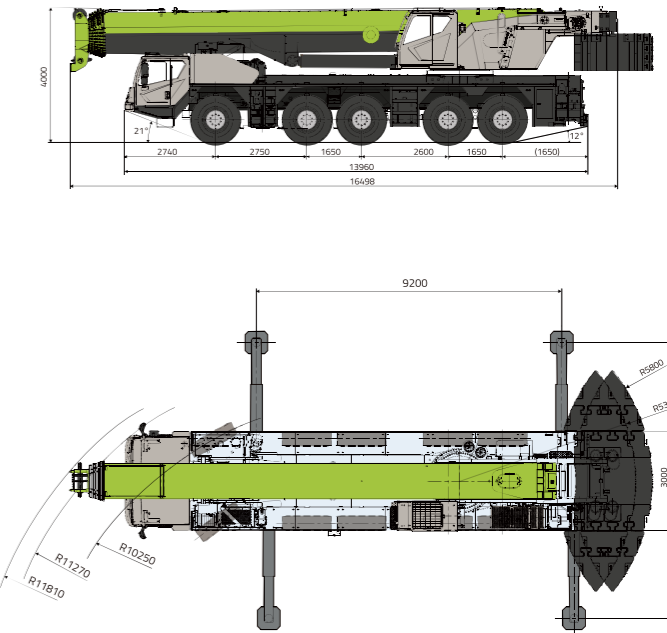


Technical Advantages

- Max. lifting height of basic boom 14m, max. lifting height of fully extended boom 75m, max. lifting height of jib 110.7m
- Heavy-duty 5-axle chassis platform with 4 axles drive, all-axle steering (10×8×10)
- Benz OM471 engine + ZF 12-speeds automatic transmission, 445 tires for enhanced load ability, enabling low-speed transport with counterweights
- CAN bus technology, can monitor outrigger pressure and frame tilt angle in real time for both the chassis and superstructure
- Comprehensively upgraded control system achieves a perfect balance between operational speed, smoothness, and precision micro-movements.
- Operator's cab features a vertical 10.4-inch dual-function LCD touchscreen LMI that integrates all operational controls, providing optimal viewing angles.

Dimensions

Unit: mm



Rated Capacity Chart

Unit: t





Boom Length (m)	14	18.6	23.2	27.8	32.4	37	41.6	46.2	50.8	55.4	60	64.6	69.2	73.4	75	Boom Length (m)
2.5	250*															2.5
3	145	145	145													3
3.5	145	130.8	130.2	125												3.5
4	122.4	121.9	121.5	121.7	114											4
4.5	114.6	114.2	113.6	113.8	103											4.5
5	107.5	107.3	106.7	107.2	101	87.8										5
6	95.9	95.6	95.4	95.3	92.9	80.1	66.2									6
7	86.6	86.3	85.9	86	84.6	73.6	61.6	53.6								7
8	86.3	77.3	76.5	76.8	77.6	67.9	57.6	49.7	42.2							8
9	69.2	69	67.7	68.2	69.1	63	54	46.3	39.5	32						9
10	62.1	61.7	61.1	61.1	61.8	58.8	50.8	43.1	37	31						10
11	56.3	55.9	54.9	55.2	55	55	47.9	40.4	34.7	30	26					11
12		51.1	50.2	50	48	49	45	37.8	32.7	28.4	25	21.9				12
14		42.9	42	42.7	42	43	40.2	33.5	29	25.6	22.8	20	16			14
16			36.3	36.4	36.8	37.8	36.3	29.9	26	23.2	20.8	18.3	15.8	13	12	16
18			31	31.5	32	32.8	32.9	26.9	23.6	21.1	19.1	16.8	15.2	12.9	12	18
20			26.9	27.6	28	28.8	29.6	24.4	21.4	19.3	17.5	15.5	14	12.7	11.8	20
22				23.5	24.5	25	26	22	19.5	17.7	16.1	14.3	13	12.5	11.5	22
24				20.6	21.4	22	23	19.5	17.9	16.4	14.9	13.3	12.1	12.1	11.1	24
26					18.8	19.6	20.3	17.5	16.5	15	13.7	12.4	11.3	11.3	10.7	26
28					16.6	17.4	18	15.6	15.2	13.8	12.8	11.6	10.5	10.6	10.3	28
30						15.5	16	14	14	12.8	11.8	10.9	9.9	10	9.7	30
32							14.5	13	12.8	11.9	10.9	10.2	9.3	9.4	9.1	32
34							13.3	12	11.8	11	10.1	9.5	8.8	8.9	8.6	34
36							12	10.5	10.7	10.3	9.4	8.9	8.3	8.3	8.1	36
38								9.5	9.8	9.6	8.8	8.3	7.8	7.7	7.6	38
40								8.5	9	8.9	8.2	7.7	7.4	7.2	7.1	40
42									8.2	8.3	7.6	7.2	7	6.7	6.6	42
44									7.3	7.7	7.1	6.7	6.5	6.3	6.2	44
46										7.1	6.6	6.3	6.1	5.9	5.8	46
48											6.4	6.2	5.9	5.7	5.4	48
50												5.8	5.5	5.4	5.1	50
52												5.4	5.1	5	4.8	52
54													4.8	4.7	4.5	54
56													4.5	4.5	4.2	56
58													4.2	4.2	3.9	58
60														3.9	3.7	60
62															3.4	62
64															3.2	64
66																66
68																68
70																70



ZOOMLION

Rough Terrain Crane

 34.0m  40t

ZRT400V452-1E

Max. lifting moment with basic boom	Max. lifting moment with fully extended boom	Max. driving speed	Max. gradeability
1430 kN·m	850 kN·m	37 km/h	52%

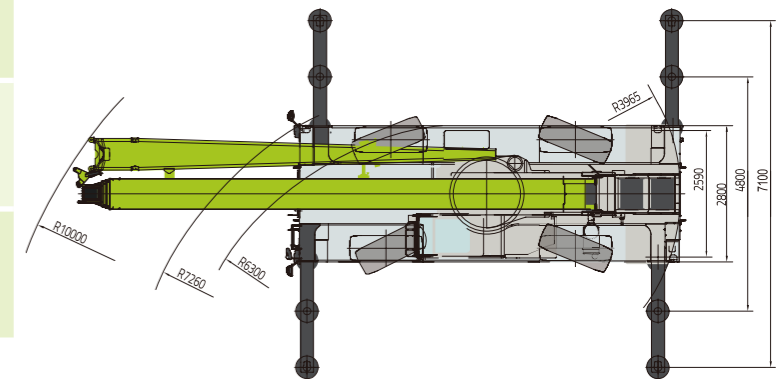
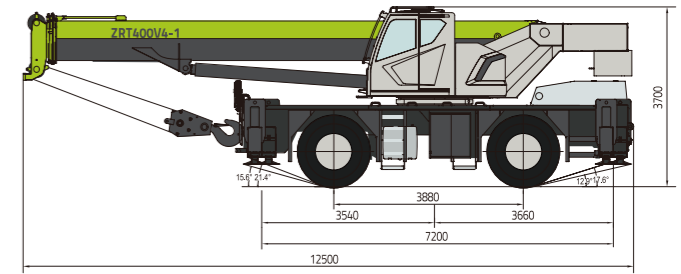


Technical Advantages

- 4-section U-shaped fully hydraulic telescoping main boom, 10.4-34m, featuring arbitrary telescoping modes for stable operation within permissible height and load conditions.
- With a lightweight boom design and the application of high-strength materials, the lifting performance is enhanced.
- Equipped with a Cummins 129kW Euro V engine, meeting the latest emission standards and reducing environmental impact.
- High fuel efficiency and low maintenance costs, providing significant economic benefits to users.
- An efficient hydraulic variable pump system and hydraulic proportional valves provide stable hydraulic output, ensuring precise operation and quick response.
- The spacious driver's cab is equipped with a 10.1 full-color touchscreen display and a multifunction control lever, making operation more intuitive and convenient.



Dimensions

Unit: mm



Rated Capacity Chart



Unit: t

	10.4	15.2	20	24.8	29.6	34	
 10.4							 10.4
3.0	40.0						3.0
3.5	37.0	23.0	22.0				3.5
4.0	34.0	23.0	22.0				4.0
4.5	31.8	23.0	22.0	19.0			4.5
5.0	29.2	23.0	21.0	18.0	14.0		5.0
5.5	26.5	23.0	20.5	17.3	13.8		5.5
6.0	23.9	22.5	20.0	16.6	13.5	10.0	6.0
7.0	20.2	19.5	18.5	15.3	12.5	9.8	7.0
8.0		16.5	17.0	14.0	11.5	9.6	8.0
9.0		13.0	13.5	12.8	10.5	9.4	9.0
10.0		10.6	11.0	11.2	9.7	8.6	10.0
12.0			7.9	8.0	8.1	7.4	12.0
14.0			5.9	6.0	6.1	6.2	14.0
16.0				4.7	4.8	4.9	16.0
18.0				3.7	3.8	4.0	18.0
20.0				3.0	3.1	3.2	20.0
22.0					2.5	2.6	22.0
24.0					2.1	2.2	24.0
26.0						1.8	26.0
28.0							28.0
30.0							30.0
32.0							32.0
34.0							34.0
36.0							36.0
38.0							38.0



ZOOMLION

Rough Terrain Crane

 36.0m  50t

ZRT500V452E

Max. lifting moment with basic boom

1715 kN·m

Max. lifting moment with fully extended boom

826 kN·m

Max. driving speed

38 km/h

Max. gradeability

79%

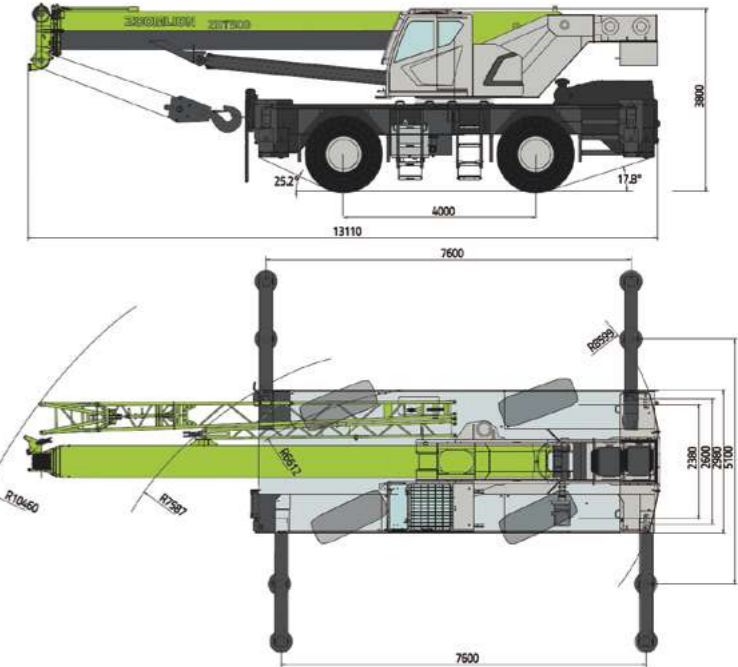


Technical Advantages

- 4-section U-shaped 10.9-36m long fully hydraulic telescopic main boom, with any telescopic mode, ensures operation at the permitted height and under the conditions.
- The lightweight design of the boom and the application of high-strength materials provide stronger lifting capacity.
- Equipped with Cummins 194kw Euro 5 engine, it meets regional emission requirements.
- Its high fuel efficiency and low maintenance cost bring significant economic benefits to users.
- The whole vehicle operation anti-tilt safety management control ensures that the whole vehicle is always safe through operation status detection and torque protection under space-constrained outrigger full retraction and tire working conditions.
- Special large-span chassis with good stability and large ground clearance, suitable for complex working environments.

Dimensions

Unit: mm



Rated Capacity Chart



Unit: t

Height (m)	10.9	15.1	19.3	23.5	27.7	31.9	36	Height (m)
3.0	50	27						3.0
3.5	45	27	24.5					3.5
4.0	42	27	24	21.5				4.0
4.5	37	26	23.5	21	17.5			4.5
5.0	33.5	25	23	20.5	17	13		5.0
5.5	31.8	24	22.5	20	16.5	12.7		5.5
6.0	29	23	22	19.5	16	12.4	11.5	6.0
7.0	25	22	21	18.5	14.8	12	10.9	7.0
8.0		19	19.5	17.5	13.8	11.5	10.2	8.0
9.0		15.5	16	16.5	12.8	10.8	9.5	9.0
10.0		12.5	13	13.3	11.8	10.1	8.8	10.0
11.0		10.3	10.8	11.1	11	9.4	8.3	11.0
12.0			9.3	9.5	9.8	8.9	7.8	12.0
14.0			6.9	7.1	7.4	7.5	7	14.0
16.0				5.5	5.8	5.9	6	16.0
18.0				4.3	4.6	4.7	4.8	18.0
20.0					3.7	3.8	3.9	20.0
22.0					3	3.1	3.2	22.0
24.0						2.5	2.6	24.0
26.0						2.1	2.2	26.0
28.0							1.8	28.0
30.0							1.5	30.0
30.0								30.0



ZOOMLION

Rough Terrain Crane

 45.5m  60t

ZRT600V552-1

Max. lifting moment with basic boom	Max. lifting moment with fully extended boom	Max. driving speed	Max. gradeability
2337 kN·m	1160 kN·m	35 km/h	60%

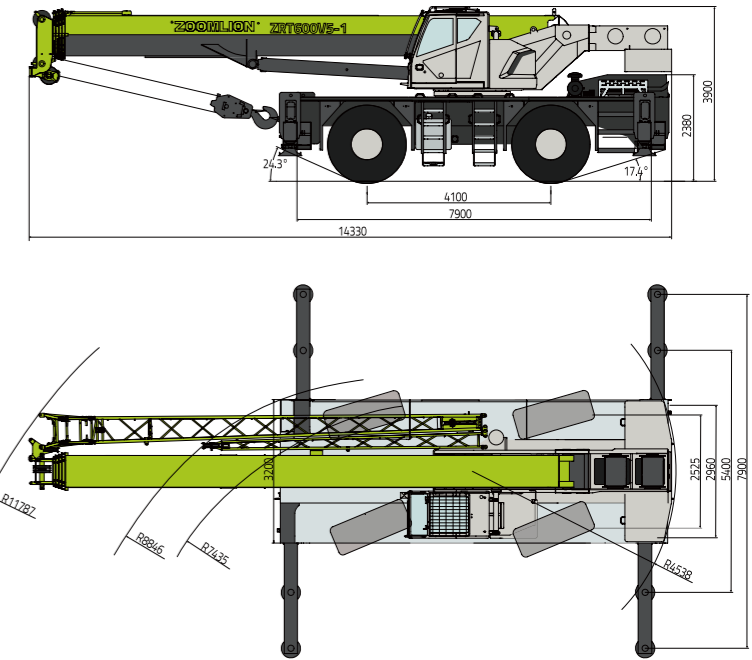


Technical Advantages

- 5 sections U-shaped 11.7-45.5m main boom with maximum 60t lifting capacity, enabling stable operation under various height and load conditions.
- Equipped with a Cummins 194kw/2500rpm Euro V engine, ensuring robust power, high fuel efficiency, low fuel consumption, meeting the latest Euro V emission standard.
- Equipped with the large-diameter off-road tires and a rear oscillating pivot suspension system with cylinder lock, ensuring excellent adaptability to various terrain conditions for stable operation
- Newly upgraded driver's cab offers a spacious space and superior visibility, equipped with 10.1 full-color touchscreen and multi-function control lever.
- AC and the ergonomic seat in driver's cab enhance the operator's working efficiency and comfort.

Dimensions

Unit: mm



Rated Capacity Chart

Unit: t



Boom Length (m)	11.7	16	20.3	26.6	32.9	39.2	45.5	Boom Length (m)
3.0	60	46	35					3.0
3.5	58	46	35					3.5
4.0	56	46	35					4.0
4.5	53	44	33	25				4.5
5.0	47	42	32	25				5.0
5.5	42	40	32	24				5.5
6.0	37.5	36.5	31	24	20.5			6.0
6.5	35	34.3	29	23	20.5			6.5
7.0	31	31	28	22.5	20			7.0
7.5	29	29	27	21	19	14.5		7.5
8.0	27	27	25.5	20.5	18.5	13.5		8.0
9.0	21	20.5	20	17.5	17	13	10	9.0
10.0		16.5	16	16.5	15.5	11.5	9.6	10.0
11.0		13.4	13.2	13.6	14	11	9.3	11.0
12.0		11	11	12.1	11.8	10	9.1	12.0
14.0			7.8	8.8	9.4	9	8.2	14.0
16.0			5.6	6.7	7.3	7.4	7.4	16.0
18.0				5.2	5.8	6.1	6.2	18.0
20.0				4	4.6	4.9	5.2	20.0
22.0					3.6	4	4.3	22.0
24.0					2.8	3.2	3.5	24.0
26.0					2.15	2.6	2.8	26.0
28.0						2.1	2.3	28.0
30.0						1.6	1.9	30.0
32.0						1.2	1.5	32.0
34.0							1.1	34.0



ZOOMLION

Rough Terrain Crane

 46.0m  70t

ZRT700V552-1E

Max. lifting moment with basic boom

2499 kN·m

Max. lifting moment with fully extended boom

1215 kN·m

Max. driving speed

37 km/h

Max. gradeability

70%

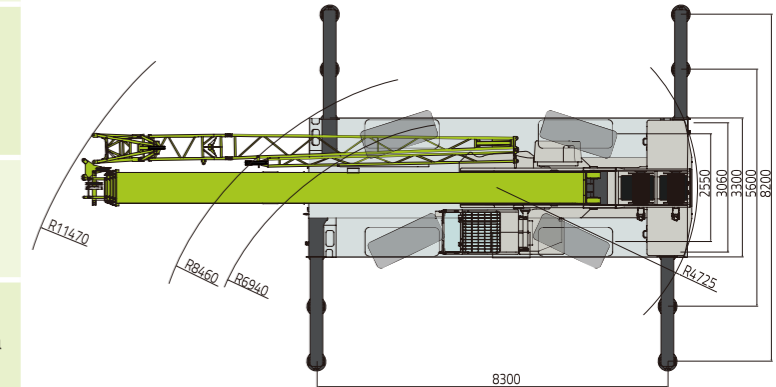
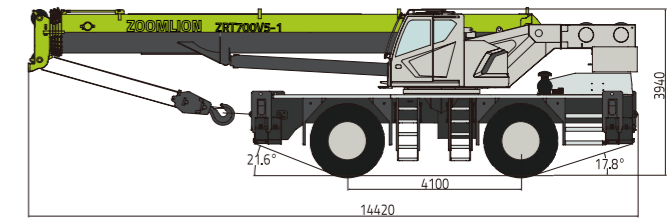


Technical Advantages

- 5-section U-shaped 46m fully hydraulic telescopic main boom, with any telescopic mode, can travel with load, and has leading comprehensive lifting performance.
- Equipped with Cummins 194kw/2500rpm Euro V engine, it meets the emission requirements of the European region.
- The whole machine has obtained the CE certificate and meets the standard requirements of the European region.
- Adopting 8.3m×8.2m large-span outriggers, the hoisting operation is more stable, the ground clearance and approach/ departure angle are large, and super off-road performance is achieved.
- Equipped with outrigger position detection function, the operation is safer; the outrigger remote control is standard, and the operation is more convenient.
- The whole vehicle has intelligent functions such as anti-tilt safety control, data feedback, fault self-diagnosis, and remote data export, which can ensure safe and reliable operation.

Dimensions

Unit: mm



Rated Capacity Chart

Unit: t

	11.8	16.2	20.5	26.8	33.1	39.4	46.0	
3.0	70.0*	46.0	35.0					3.0
3.5	64.0	46.0	35.0					3.5
4.0	58.0	46.0	35.0	26.0				4.0
4.5	54.0	44.0	35.0	26.0				4.5
5.0	49.5	42.0	34.0	26.0	21.5			5.0
5.5	45.5	40.0	33.0	26.0	21.5			5.5
6.0	42.5	37.0	32.0	26.0	21.5			6.0
7.0	33.5	33.0	29.0	24.6	20.5	15.5		7.0
8.0	28.5	28.0	26.0	22.6	19.0	15.5		8.0
9.0	23.0	23.0	23.0	20.6	17.5	14.4	11.0	9.0
10.0		19.6	19.3	18.9	16.2	13.4	11.0	10.0
11.0		16.1	15.8	17.3	15.0	12.6	10.3	11.0
12.0		13.4	13.1	14.3	14.0	11.8	9.8	12.0
14.0			9.3	10.5	11.3	10.4	8.6	14.0
16.0			6.8	7.9	8.7	9.2	7.6	16.0
18.0				6.1	6.8	7.3	6.8	18.0
20.0				4.8	5.5	5.9	6.2	20.0
22.0				3.7	4.4	4.8	5.1	22.0
24.0					3.5	3.9	4.2	24.0
26.0					2.8	3.2	3.5	26.0
28.0					2.2	2.6	2.9	28.0
30.0						2.1	2.4	30.0
32.0						1.7	2.0	32.0
34.0						1.3	1.6	34.0
36.0							1.3	36.0
38.0							1.0	38.0



ZOOMLION

Rough Terrain Crane

 48.0m  90t

ZRT900V552-1

Max. lifting moment with basic boom	Max. lifting moment with fully extended boom	Max. driving speed	Max. gradeability
2950 kN·m	1500 kN·m	37 km/h	75%

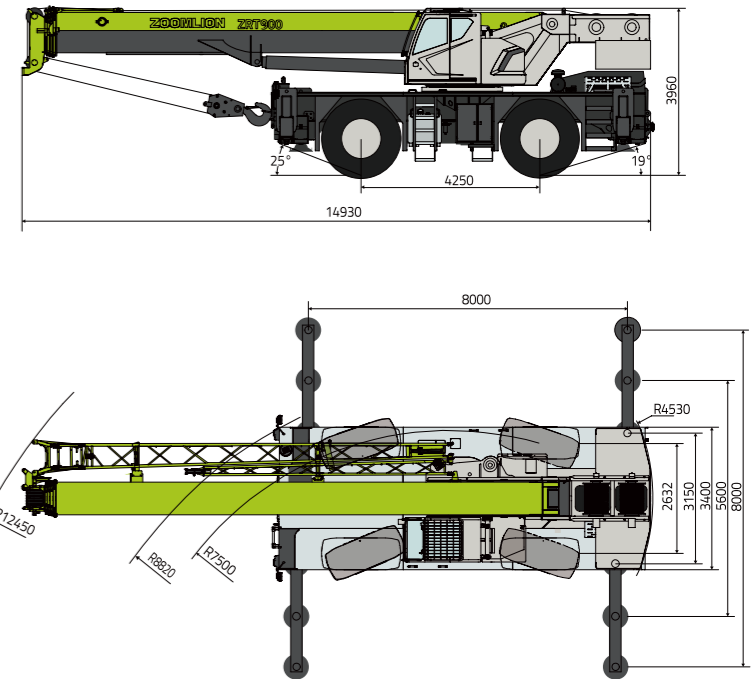


Technical Advantages

- 5-section U-shaped 12.3-48m main boom, with any telescopic mode, can operate stably under the permitted height and load conditions.
- The lifting performance is stronger through the lightweight design of the boom and the application of high-strength materials.
- Equipped with Cummins 194kW (260hp) Euro V emission engine, it meets European emission standards and has powerful power to ensure excellent performance on various complex terrains.
- Fully upgraded control system, fast operation response speed, good micro-motion, efficient and precise compound movements.
- Equipped with a new upgraded driver's cab, which can be tilted 20°, providing spacious space and excellent vision. The layout of the driver's cab is ergonomically designed, which further improves the operator's comfort and work efficiency.

Dimensions

Unit: mm



Rated Capacity Chart

Unit: t

Boom Length (m)	12.3	16.9	21.4	25.9	30.4	34.9	39.4	43.9	48	Boom Length (m)
2.5	90°									2.5
3.0	85°	58								3.0
3.5	75	58	45							3.5
4.0	68	55	45							4.0
4.5	63	54	45	31						4.5
5.0	58	52.5	43.2	31						5.0
5.5	53	50.5	41.2	31	28.5					5.5
6.0	50.2	47.5	39.2	31	28.5					6.0
7.0	42	39.5	35.2	30	28	24.5				7.0
8.0	35.5	33.5	31.2	27.5	26	22	19.5			8.0
9.0	27.5	27.2	26.5	25.5	23.5	21	18.3	15.8		9.0
10.0		21.6	21.5	21.5	21.5	19	17	15	11.8	10.0
11.0		17.8	17.5	17.8	18	17.5	15.8	14	11.6	11.0
12.0		15	14.5	14.8	15.5	16.5	14.6	13	11.6	12.0
14.0			10.5	10.8	12	12	12.6	11.5	10.3	14.0
16.0			7.7	8.2	9.2	9.6	9.8	10	9.4	16.0
18.0			5.5	6.2	7.2	7.7	8	8.1	8.5	18.0
20.0				4.8	5.7	6.1	6.4	6.6	7	20.0
22.0				3.7	4.5	4.8	5.3	5.5	5.7	22.0
24.0					3.5	3.9	4.3	4.5	4.6	24.0
26.0					2.7	3.1	3.5	3.7	3.8	26.0
28.0						2.4	2.8	3	3.2	28.0
30.0							1.8	2.3	2.7	30.0
32.0								1.8	2.2	32.0
34.0								1.3	1.7	34.0
36.0								1.1	1.3	36.0
38.0									1	38.0



ZOOMLION

Rough Terrain Crane

 49.0m  110t

ZRT1100V552

Max. lifting moment with basic boom	Max. lifting moment with fully extended boom	Max. driving speed	Max. gradeability
3332 kN·m	1658 kN·m	37 km/h	75%

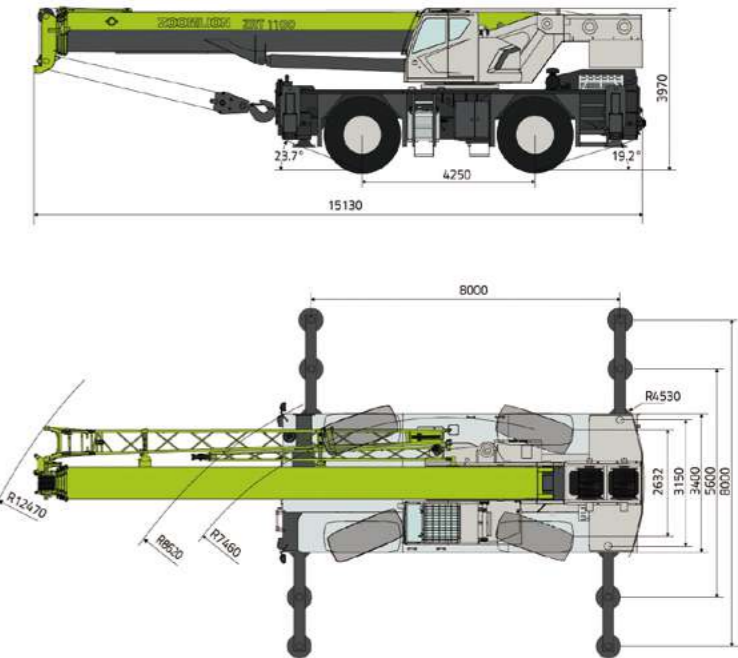


Technical Advantages

- 5-section U-shaped 12.5-49m fully hydraulic telescopic main boom, with any telescopic mode, can operate stably under the permitted height and load conditions.
- The lifting performance is stronger through the lightweight design of the boom and the application of high-strength materials.
- Equipped with Cummins 194kW Euro 5 engine, it meets the latest European emission standards and reduces the impact on the environment.
- Its high fuel efficiency and low maintenance cost bring significant economic benefits to users.
- Equipped with outrigger position detection function, the operation is safer; standard outrigger remote control makes the operation more convenient.
- The frame adopts an inverted trapezoidal cross-section body with better rigidity, a large-span special chassis, good stability, and large ground clearance, which is suitable for complex working environments.

Dimensions

Unit: mm



Rated Capacity Chart

Unit: t

↙ m	12.5	17.1	21.7	26.2	30.7	35.2	39.7	44.2	49.0	↘ m
2.5	110*									2.5
3.0	100*	66								3.0
3.5	85*	66								3.5
4.0	78*	66	50							4.0
4.5	72*	63	48	32						4.5
5.0	68	59	46	32						5.0
5.5	60	54	43	32	30					5.5
6.0	54.3	51	40.5	32	30	26				6.0
7.0	45.5	44	36.5	32	29	26				7.0
8.0	39	38	33	29	27	25	21			8.0
9.0	30	29.5	29	26.5	25	22.5	19.7	16.5		9.0
10.0		23.5	23.6	24.6	23	20.6	18.2	16	12.4	10.0
11.0		19.5	19.3	20.5	21	18.6	17	15	12.2	11.0
12.0		16.3	16.2	17.2	18	17.6	15.8	14.2	12	12.0
14.0			11.7	12.6	13.3	14	13.5	12.5	11.5	14.0
16.0			8.8	9.6	10.3	10.8	11.3	11	10.4	16.0
18.0			6.6	7.5	8.1	8.6	9	9.4	9.4	18.0
20.0				5.9	6.5	7	7.3	7.7	8.2	20.0
22.0				4.6	5.2	5.8	6.1	6.3	6.7	22.0
24.0					4.2	4.7	5	5.2	5.5	24.0
26.0					3.3	3.8	4.1	4.4	4.7	26.0
28.0						3.1	3.4	3.7	3.9	28.0
30.0						2.5	2.8	3.1	3.3	30.0
32.0						1.9	2.3	2.6	2.8	32.0
34.0							1.8	2.1	2.3	34.0
36.0								1.7	1.9	36.0
38.0								1.3	1.6	38.0
40.0									1.2	40.0
42.0										42.0



ZOOMLION

Rough Terrain Crane

 50.0m  130t

ZRT1300V552

Max. lifting moment with basic boom

3760 kN·m

Max. lifting moment with fully extended boom

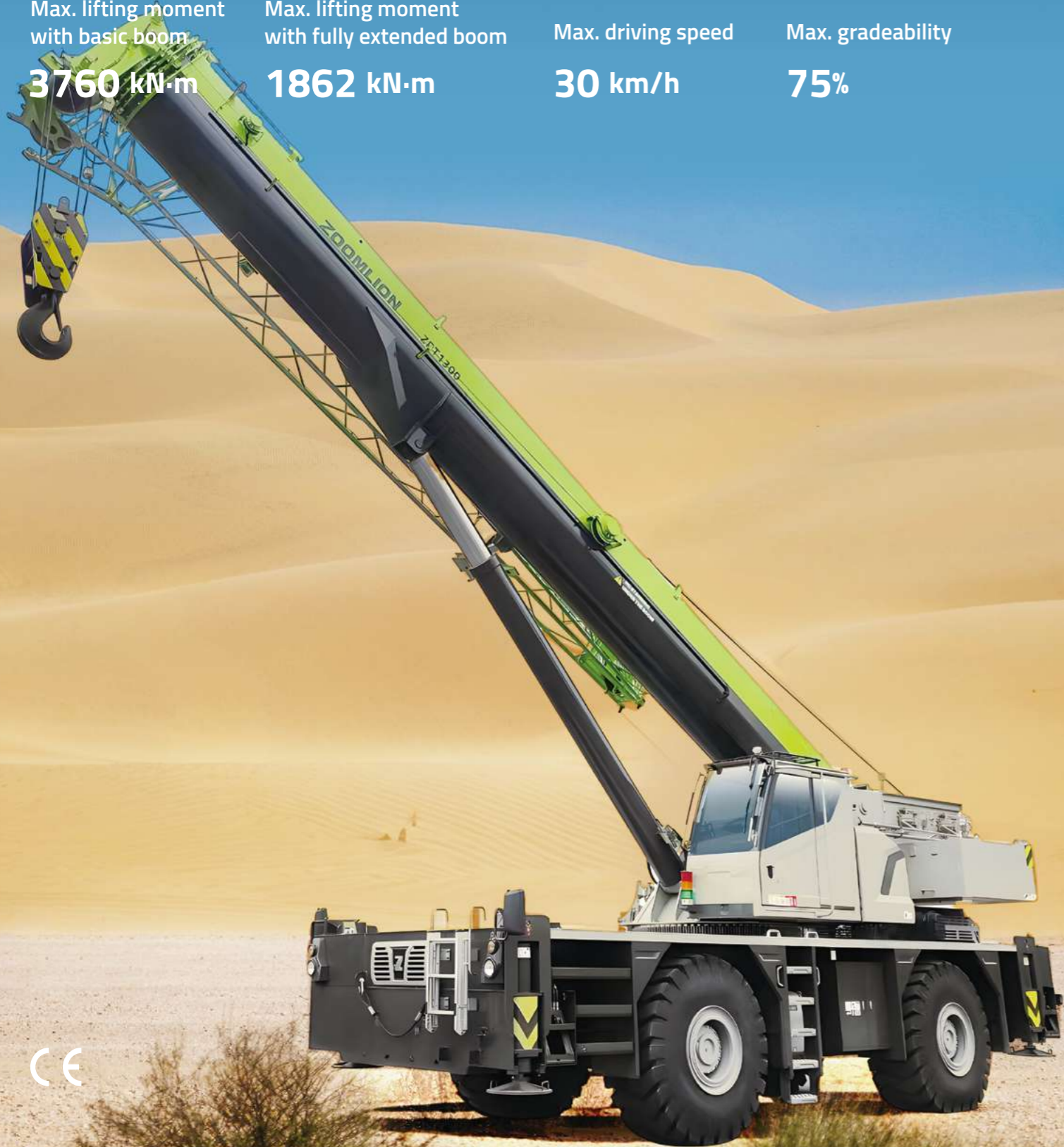
1862 kN·m

Max. driving speed

30 km/h

Max. gradeability

75%

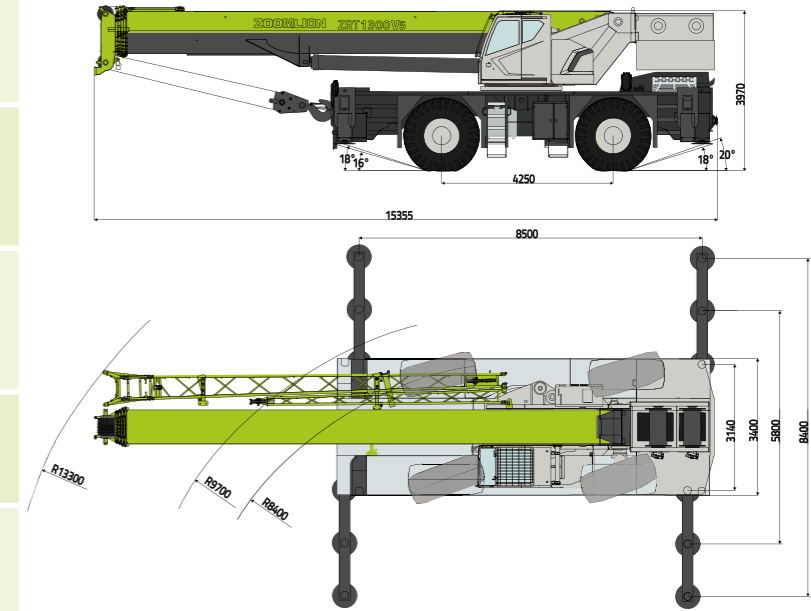


Technical Advantages

- The crane boasts the industry's strongest 50m U-shaped main boom in its class, with outrigger load capacity leading all peer models.
- Equipped with Cummins 194kW (260hp) Euro V emission engine, four-wheel drive, four-wheel multi-mode steering, and super off-road performance and maneuverability.
- Adopting electric proportional constant power load-sensitive pump, "light load high speed, heavy load low speed" is the best match.
- Equipped with a new upgraded driver's cab, which can be tilted 20°, providing spacious space and excellent vision.
- The layout of the driver's cab is ergonomically designed, which further improves the operator's comfort and work efficiency.

Dimensions

Unit: mm



Rated Capacity Chart

Unit: t

Reach (m)	12.7	17.5	22.2	27.0	31.8	36.6	41.4	46.2	50.0	Reach (m)
2.5	130.0*									2.5
3.0	110.0*	70.0	50.0							3.0
3.5	96.0*	70.0	50.0							3.5
4.0	86.0*	70.0	50.0	38.0						4.0
4.5	80.0*	70.0	50.0	38.0						4.5
5.0	73.0*	65.0	50.0	38.0	36.0					5.0
5.5	69.0	60.0	48.0	38.0	36.0					5.5
6.0	64.0	55.0	46.5	37.0	36.0					6.0
7.0	53.0	47.0	42.0	36.0	35.0	31.0				7.0
8.0	45.0	41.0	38.0	34.0	33.0	30.0	22.0			8.0
9.0	36.0	35.5	35.0	32.0	30.0	28.0	22.0	19.0		9.0
10.0		31.4	31.0	29.0	27.5	26.0	21.0	18.0	14.5	10.0
11.0		26.0	25.7	27.0	25.5	24.0	20.0	17.0	14.0	11.0
12.0		21.8	21.5	22.7	23.5	22.0	18.5	16.0	13.5	12.0
14.0			15.5	16.7	17.5	18.3	16.0	14.0	13.0	14.0
16.0			11.5	12.7	13.5	14.2	14.6	12.5	11.5	16.0
18.0				9.9	10.7	11.4	11.8	11.5	10.5	18.0
20.0				7.9	8.6	9.2	9.6	10.0	9.5	20.0
22.0				6.2	6.9	7.5	7.9	8.3	8.6	22.0
24.0					5.6	6.2	6.5	6.9	7.2	24.0
26.0					4.5	5.1	5.4	5.8	6.0	26.0
28.0						4.2	4.5	4.9	5.1	28.0
30.0						3.4	3.7	4.1	4.3	30.0
32.0							3.1	3.4	3.6	32.0
34.0							2.5	2.8	3.0	34.0
36.0								2.4	2.5	36.0
38.0								2.0	2.1	38.0
40.0									1.7	40.0
42.0									1.4	42.0



ZOOMLION

Telescopic Boom Crawler Crane

ZCT600V552

Max. lifting moment

225 t·m

Engine rated power

194 kW

Counterweight

20 t

60t

11.9~46m

46m +16m

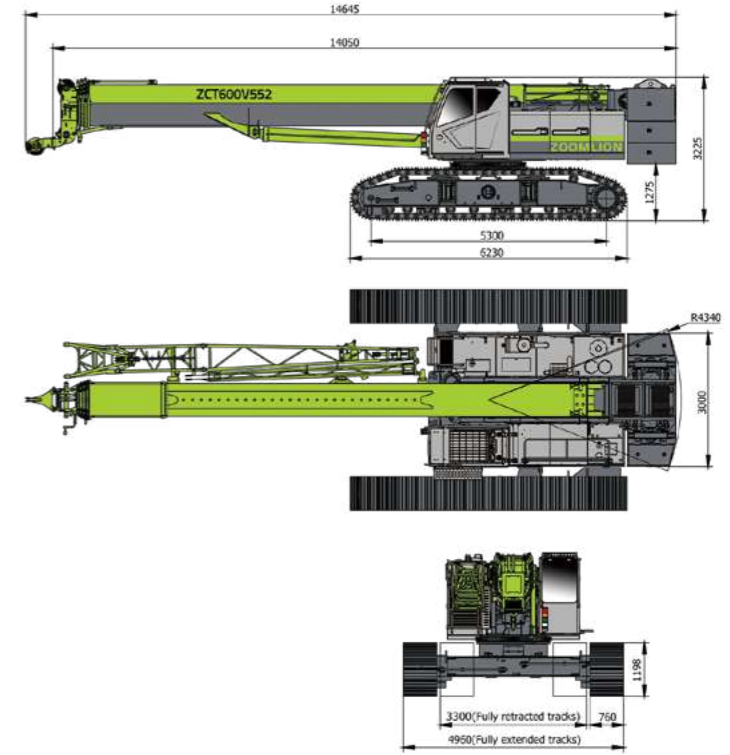


Technical Advantages

- Max. lifting moment 225t·m, 11t max. lifting capacity of fully extended boom, delivering exceptional comprehensive lifting performance.
- Features a crawler chassis with a 4.2m gauge × 5.3m ground contact length, ensuring excellent overall vehicle stability.
- High-torque travel reducer + the large-displacement motor enables a 45% gradeability.
- Equipped with full-range cameras (360° surround view optional) for safe operation and transition.
- Standard virtual wall function for worry-free operation in narrow spaces.
- Equipped with counterweight self-assembly and self-disassembly function and graded counterweights to adapt to multiple working conditions.
- Independent tip boom configuration available, enabling coordinated operation of main and auxiliary hooks.
- Standard vertical outriggers, a tilting operator's cab, an anemometer, centralized lubrication system, etc.

Dimensions

Unit: mm



Rated Capacity Chart

Cylinder I fully extended; Tracks fully extended; 360° working range; 20t counterweight; Ground slopes≤1% (Unit: t)

m	11.9	16.3	20.6	24.8	29	33.2	37.4	41.6	46	m
3	60	46								3
3.5	54	46	38							3.5
4	52	46	35	29						4
4.5	50	46	33	28	27					4.5
5	44	43	31	27.5	27					5
5.5	38	37	28	25.5	27					5.5
6	36	35	27	24.5	27	22				6
7	27	26.5	24.5	22	24.5	20	19			7
8	21	21	22	19.5	21.5	18	16.8	15		8
9		17	18	17.5	19.2	16.5	14.5	14	11	9
10		14.5	14.5	15.5	15.6	15	13.6	12.8	10.8	10
11		11.2	11.5	11.8	12.5	13	12.4	11.2	10	11
12		9.8	10	11.5	11.5	12.5	11.5	10.4	9.6	12
14			7.8	8.4	9	9.6	9.8	9	8.6	14
16			5.5	6.5	7	7.5	7.8	8	7.6	16
18				5	5.2	6	6.2	6.5	6.8	18
20				3.8	4.1	4.8	5	5	5.6	20
22					3.1	3.7	4	4.2	4.5	22
24						3	3.2	3.2	3.7	24
26						2.4	2.6	2.6	3	26
28							2.1	2.2	2.5	28
30							1.6	1.8	2.1	30
32								1.4	1.8	32
34								1.1	1.4	34
36									1.1	36
38									0.9	38



ZOOMLION

Telescopic Boom Crawler Crane

ZCT1000V552.1

-  100t
-  12.1~47m
-  47m +14.2m

Max. lifting moment

315 t·m

Engine rated power

209 kW

Rear counterweight

26.3 t

Central ballast

7 t

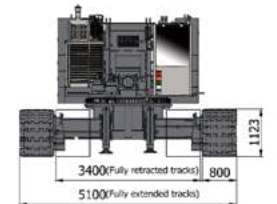
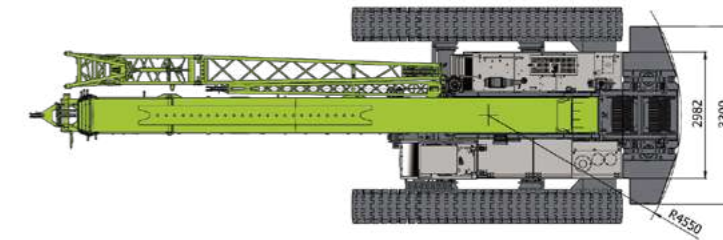
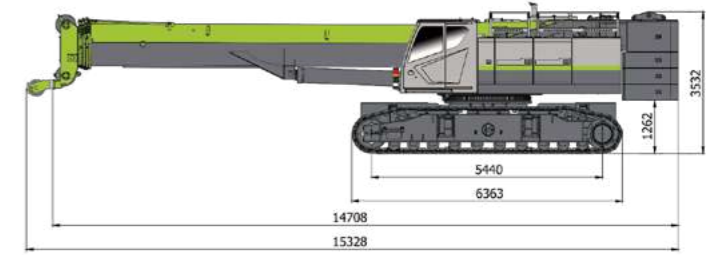


Technical Advantages

- 5-section rope-sheave 12.1-47m boom, 8.5-14.2m jib, and 0.6m rooster sheave.
- Optional triple-belt tracks and flat tracks.
- Boasts a maximum single-rope pull of 8.6t and a maximum lifting speed of 140m/min.
- Equipped with full-range cameras (360° surround view optional) for safe operation and transition.
- Optional mobile phone remote control for loading/unloading from trailer, with a standard virtual wall function.
- Equipped with counterweight self-assembly and self-disassembly function and graded counterweights to adapt to multiple working conditions.
- Standard vertical outriggers, a tilting operator's cab, an anemometer, centralized lubrication system, etc.



Dimensions

Unit: mm



Rated Capacity Chart

Cylinder I fully extended; Tracks fully extended; 360° working range; 26.3t counterweight; Central ballast 7t; Ground slope≤1% (Unit: t)

 m	12.1	16.6	21	25.5	30	34.5	39	43.5	47	 m
2.5	100									2.5
3	90	70								3
3.5	84	65	50							3.5
4	76	63	50	38						4
4.5	70	62	48	38						4.5
5	62	60	48	38	36					5
5.5	56	55	46	38	36					5.5
6	51	50	44	36	34	30				6
7	41	39.5	38	34	32	29				7
8	33	32.5	32	30	29	26	22			8
9		26.8	26.5	25.2	26	24	22	19.5		9
10		22.6	22.3	22	22.5	22	21	18	14	10
11		19.4	18.8	19.6	19.5	20	20	17	14	11
12		16.8	16	17.5	17	18	17.1	16	13.5	12
14			12	13.4	13.2	13.5	14.2	14	12	14
16			9.3	10.3	10.6	11	11.5	11.5	11	16
18				8.3	8.6	9.2	9.5	9.5	9.8	18
20				6.6	7.1	7.4	7.6	8.1	8.5	20
22					5.8	6.3	6.6	6.8	7.2	22
24					4.6	5.3	5.4	5.6	6	24
26						4.2	4.5	4.7	5	26
28						3.2	3.7	4	4.3	28
30							3	3.2	3.6	30
32							2.5	2.8	3.1	32
34								2.2	2.7	34
36								1.8	2.2	36



ZOOMLION

Telescopic Boom Crawler Crane

ZCT1000A553

Max. lifting moment

363 t·m

Engine rated power

209 kW


Rear counterweight

32 t

Central ballast

16 t

 100t

 12.9~51m

 51m +35m

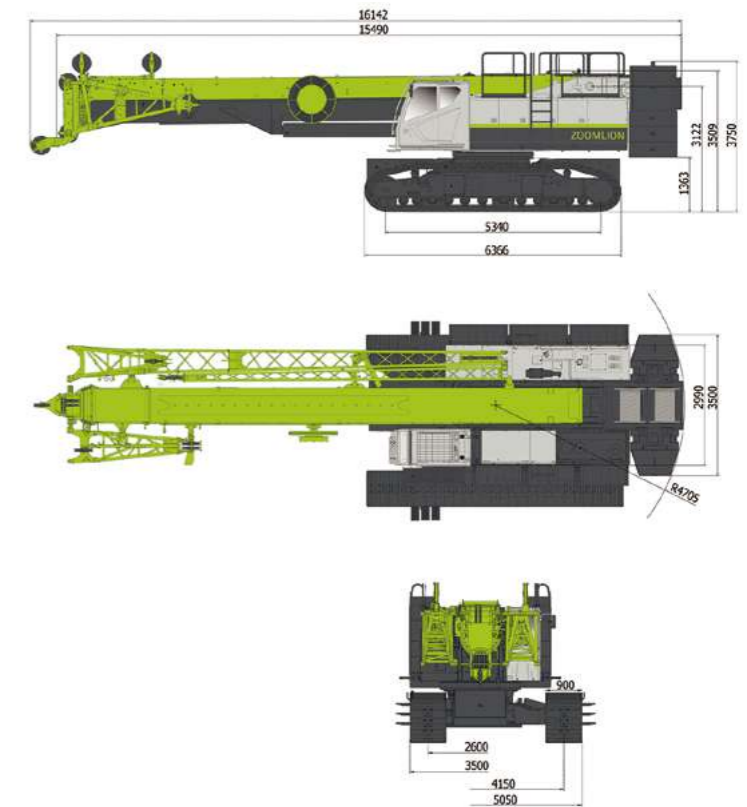


Technical Advantages

- **Multi-Condition Adaptability:** 5-section rope-sheave 12.9~51m boom, 10.4 to 35m hydraulic jib, 3m tip boom, and 0.6m rooster sheave. It is equipped with a dual hook coordination working condition, full retracted, intermediately extended, and fully extended crawler frame working conditions, as well as graded counterweight conditions.
- **Excellent Operating Performance:** the electric-controlled variable pump and electric-controlled proportional multi-way valve offer fast response and low impact. The single-joystick walking control mode makes operation easy and comfortable.
- **High Operational Efficiency:** high power engine, combined with dual main pump's flow-sharing technology, ensures high efficiency during compound operations.
- **Convenient Assembly and Transport:** remote control for whole crane operation, self-assembly and disassembly of tracks, self-lifting of counterweights, and loading/unloading onto trailers.
- **Easy relocation:** Equipped with crawler track, which can change tracks while traveling, with a minimum passing width of 3.5m.
- **Safe and Intelligent:** track gauge detection, spatial virtual wall, counterweight self-recognition technology, 360-degree surround view, and boom ball-joint function.



Dimensions

Unit: mm



Rated Capacity Chart

Cylinder I fully extended; Tracks fully extended; 360° working range; 32t counterweight; Central ballast 16t; Ground slopes≤1% (Unit: t)

 m	12.9	17.8	22.5	27.4	32.2	37	41.8	46.6	51	 m
3	100	80								3
3.5	82.6	75	56							3.5
4	78	70	56	40						4
4.5	74	69	56	40						4.5
5	69.3	66	56	40	38					5
5.5	64	61	56	40	38					5.5
6	60.5	58	56	40	38					6
7	48.7	46	47.7	40	38	36				7
8	39.8	39.3	38.7	38.3	38	36	28			8
9	33	32.5	32.1	32.8	33.3	33.5	27	23		9
10	27.9	27.5	27.1	27.9	28.3	31.0	25.5	22		10
11		23.6	23.2	24.3	24.5	24.8	24.5	20.8	16.5	11
12		20.5	20.1	21.2	21.4	21.7	23.0	19.7	16	12
14			15.5	16.5	16.8	17.6	18.2	17.8	15	14
16			12.2	13.2	13.8	14.2	14.9	16.0	14	16
18			9.7	10.7	11.4	11.7	12.3	11.8	12.5	18
20				8.7	9.4	9.6	10.3	10.6	10.2	20
22				7.2	7.9	8.1	8.7	9.0	8.8	22
24					6.6	6.8	7.4	7.8	7.6	24
26					5.5	5.8	6.4	6.7	6.5	26
28						5.0	5.3	5.8	5.6	28
30						4.2	4.6	5.0	4.9	30
32						3.5	4.0	4.3	4.3	32
34							3.3	3.8	3.7	34
36							2.8	3.2	3.3	36
38								2.8	2.7	38
40								2.4	2.3	40
42									2.0	42
44									1.7	44



ZOOMLION

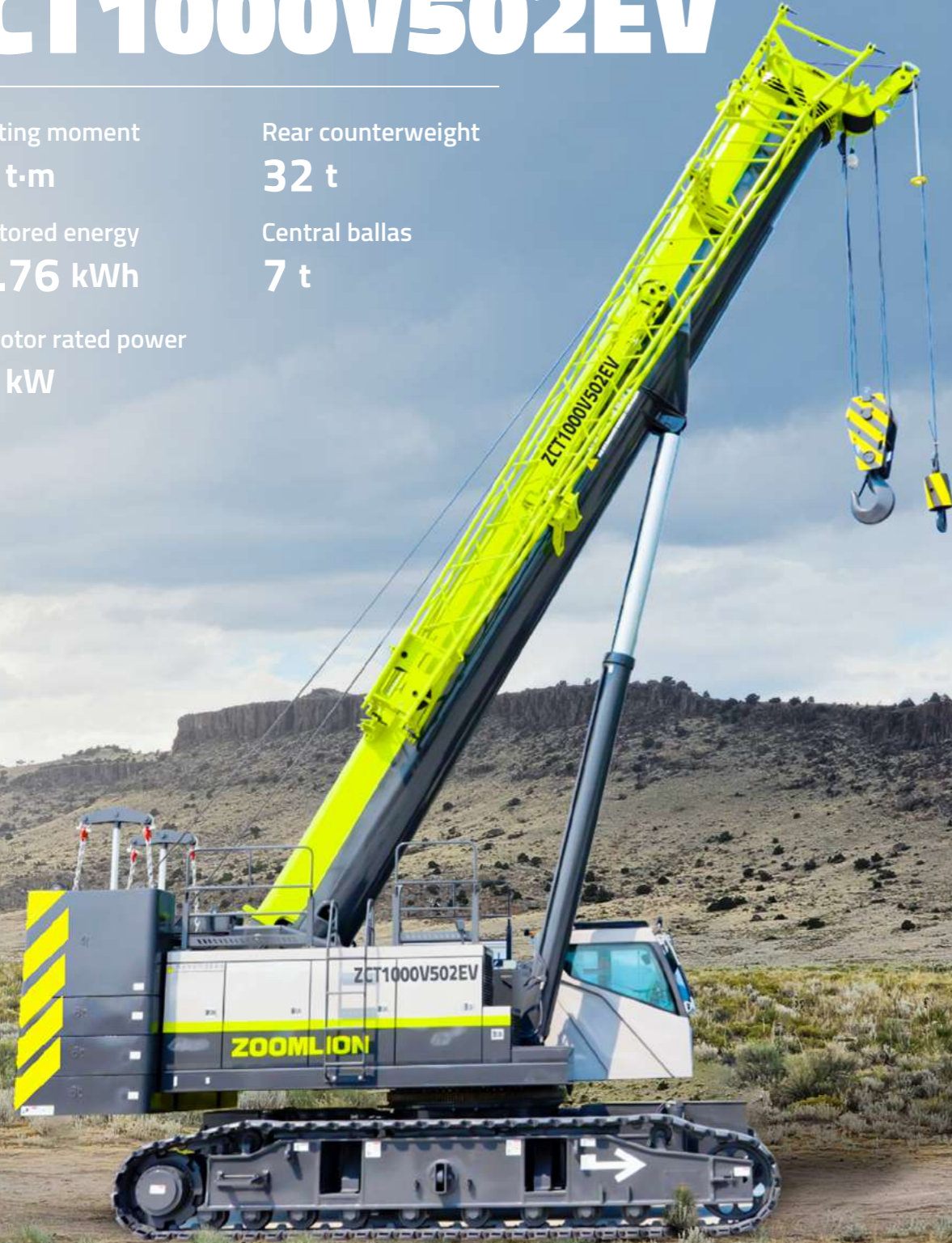
Telescopic Boom Crawler Crane



ZCT1000V502EV

- 100t
- 12.7~50m
- 50m + 16m

- Max. lifting moment
352 t·m
- Rated stored energy
288.76 kWh
- Drive motor rated power
215 kW
- Rear counterweight
32 t
- Central ballast
7 t

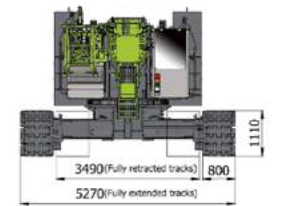
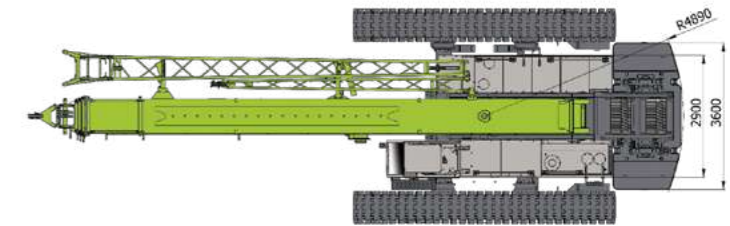
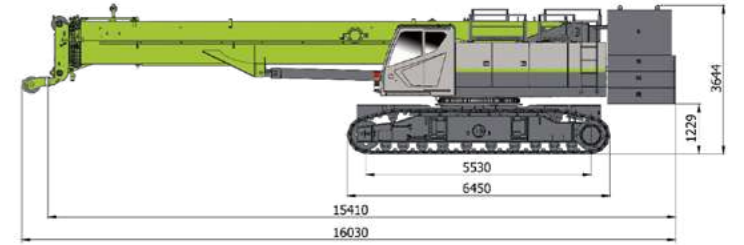


Technical Advantages

- 288kWh power batteries of large volume, supporting 8 hours of continuous operation.
- 215kw permanent magnetic synchronized motor, delivering strong driving capability and high efficiency.
- 15.6t maximum lifting capacity of the fully extended boom and a maximum single-rope pull of 8.6t.
- Fast charging with DC, 400A with two charging guns, 200A with one charging gun, 1.5h for a full charge.
- Slow charging with AC, 50m cable drum and can be connected to the grid.

Dimensions

Unit: mm



Rated Capacity Chart

Cylinder I fully extended; 360° working range; Tracks fully extended; 32t counterweight; Central ballast 7t; Ground slopes 1% (Unit: t)

Height (m)	12.7	17.5	22.2	27	31.8	36.6	41.4	46.2	50	Height (m)
2.5	100									2.5
3	90	76								3
3.5	80	74	54							3.5
4	76	72	54	39.5						4
4.5	73	70	53	39.5						4.5
5	70	65	51	38	36					5
5.5	64	60	48	38	36					5.5
6	58	55	46.5	37	36					6
7	47	46	42	36	35	31				7
8	37.5	37	36.8	34	33	30	24			8
9	31	30.5	30	31.2	30	28	24			9
10		25.7	25.2	26.3	27.5	26	24	20.5	15.6	10
11		21.8	21.5	22.6	23.4	24	21	17.8	15	11
12		18.7	18.5	19.6	20.3	20.9	20	15.8	14.5	12
14			14.1	15.2	15.8	16.4	16.8	14	12.9	14
16			10.9	12	12.7	13.2	13.6	13.5	11.8	16
18				9.6	10.2	10.8	11.2	11.5	10.7	18
20				7.8	8.4	8.9	9.4	9.4	9.2	20
22					7	7.4	7.8	7.8	8	22
24					5.8	6.2	6.5	6.6	6.8	24
26						5.2	5.5	5.7	5.8	26
28						4.4	4.6	4.9	5	28
30						3.6	3.9	4.2	4.3	30
32							3.3	3.6	3.7	32
34							2.8	3.1	3.1	34
36								2.6	2.6	36
38									2	38



ZOOMLION

Telescopic Boom Crawler Crane

ZCT1500A653

Max. lifting moment

483 t·m

Engine rated power

246 kW

Rear counterweight

42 t

Central ballast

18 t

 max 150t

 11.4~52m

 52m +43m



Technical Advantages

- Compact and flexible, with 14.1x2.99x3.14m main unit dimensions, with a swing radius of 5m. It can change tracks while traveling, with a minimum passing width of 3.5m.

- Multi-Condition Adaptability: 6-section single-cylinder pin 11.4 to 52m boom, 10.4 to 43m hydraulic jib, 3m tip boom, and 0.6m rooster sheave. It is equipped with a dual hook coordination working condition, full retracted, intermediately extended, and fully extended crawler frame working conditions, as well as graded counterweight conditions.

- Excellent Operating Performance: the electric-controlled variable pump and electric-controlled proportional multi-way valve offer fast response and low impact. The single-joystick walking control mode makes operation easy and comfortable.

- High Operational Efficiency: high power engine, combined with dual main pump's flow-sharing technology, ensures high efficiency during compound operations.

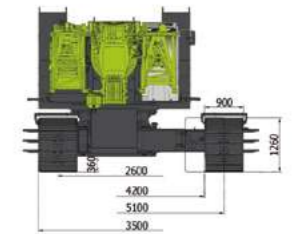
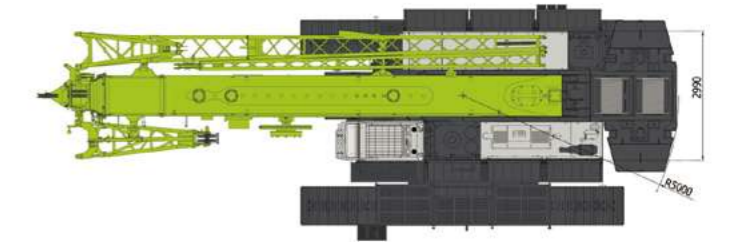
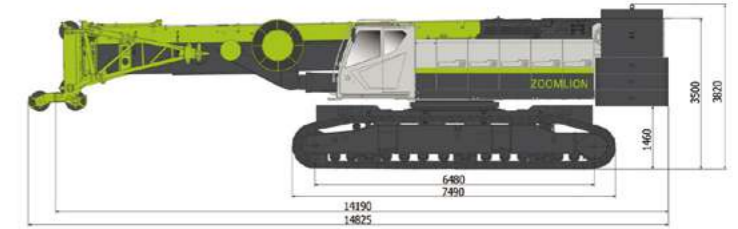
- Convenient Assembly and Transport: remote control for whole crane operation, self-assembly and disassembly of tracks, self-lifting of counterweights, and loading/unloading onto trailers.

- Convenient Construction: one-button switching between working conditions, full counterweight for track adjustments, and hydraulic luffing jib.

- Safe and Intelligent: track gauge detection, spatial virtual wall, counterweight self-recognition technology, 360-degree surround view, and boom ball-joint function.

Dimensions

Unit: mm



Rated Capacity Chart

Tracks fully extended; 360° working range; 42t counterweight; Central ballast 18t; Level and stable chassis (Unit: t)

Reach (m)	11.4	15.1	18.9	22.6	26.3	30.1	33.8	37.5	41.3	45	48.8	52	Reach (m)
3	150	95	92	90	80								3
3.5	115	95	92	90	80	60							3.5
4	105	95	92	90	80	57.8							4
4.5	100	95	92	88	75	55.7	50						4.5
5	93	89.8	86	83	70	54.7	45.9						5
5.5	87	84.8	81	78	67	51.8	45.9	38					5.5
6	80	79.8	76.8	74.6	64	49.8	43.4	37	30				6
7	69	68.3	67.5	66.8	60.8	48.4	40.3	35	29.6				7
8	58	58.5	57.5	56.8	55.6	44.6	38.2	33	28.3	24			8
9		52	51.5	52.5	50.6	42	34.8	31	27.1	23.3	20		9
10		44.5	44.2	44.7	44	40	32.6	29.3	25.6	22.4	19.2	16.5	10
11		39.5	39.6	40.1	41	38.1	30.7	27.1	24.3	21.4	18.7	16.5	11
12			34.9	35.8	36.2	34.5	28.6	25.7	23	20.5	18	16	12
14			27.5	28.4	28.9	28.4	25.3	22.7	20.8	18.4	16.6	15	14
16				23.2	23.6	23.4	22.7	20.3	18.6	17	15.3	14	16
18				19.4	20	19.5	19.5	18.4	16.8	15.4	14	12.6	18
20					17.1	16.9	16.9	16.8	15.2	14	12.9	11.7	20
22						15.2	14.9	14.8	13.9	12.9	11.7	10.8	22
24							13.5	13	12.7	11.9	10.8	9.9	24
26								11.6	11.6	11.6	10.9	10	26
28								10.3	10.3	10.3	10	9.2	28
30									9.2	9.3	9.1	8.5	30
32										8.3	8.2	7.8	32
34											7.5	7.3	34
36												6.6	36
38												5.9	38
40													40
42												4.9	42
44												4.4	44
46													46



ZOOMLION

Crawler Crane

ZCC850V-1E5

-  85t
-  13~61m
-  49m +19m

Max. lifting moment

363 t·m

Engine rated power

209 kW

Rear counterweight

28.5 t

Central ballast

9 t

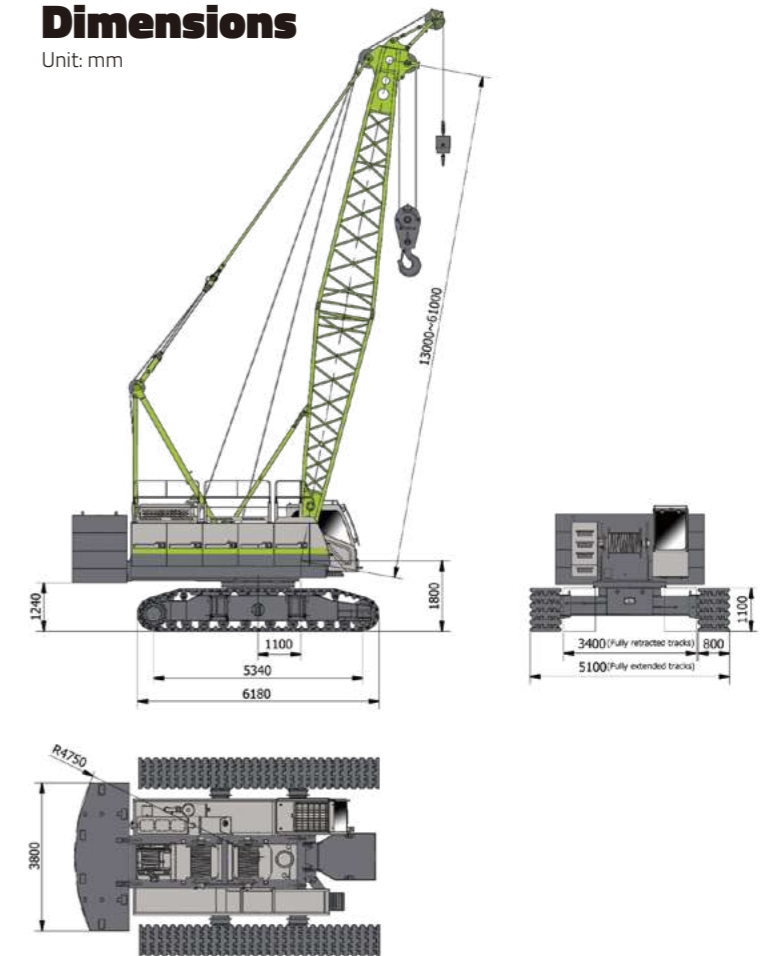


Technical Advantages

- Excellent Adaptability: Multi-level graded counterweight for unrestricted trestle construction, offers a counterweight-free operation mode for soft ground hoisting.
- Optional split and integral tip boom, enabling coordinated operation between main and auxiliary hooks.
- Excellent maneuverability: Equipped with a 9-piston motor for fast start-up response; features a low minimum stable speed and superior micro-motion control.
- Follow-up control function of adaptive load winch enables stepless speed regulation of the winch, improving efficiency.
- Convenient disassembly and transportation: Optional vertical outrigger function for efficient assembly and disassembly of the main machine;
- Optional wireless remote control for loading/unloading from trailer.

Dimensions

Unit: mm



Rated Capacity Chart

Rear counterweight 28.5t Central ballast 9t (Unit: t)




Lifting Height (m)	Lifting Capacity (t)																Lifting Height (m)	
	13	16	19	22	25	28	31	34	37	40	43	46	49	52	55	58		61
4	85																	4
5	72.6	72.6	68.8															5
6	57.3	56.6	55.5	53.6	52.5													6
7	44.9	44.9	44.9	44.2	44.2	43.9												7
8	37.2	37.2	37.2	37.2	36.5	36.2	36	35.3										8
9	31.8	31.3	31.3	31.3	31.3	30.7	30.5	30.5	30.1	29.5								9
10	27.3	27.3	27.3	27.3	27.3	27	26.6	26.3	26.3	25.9	25.5	24.8						10
11	24.1	24.1	24.1	23.7	23.7	23.7	23.7	23.4	23	23	22.6	22.6	21.9	21.6				11
12	21.6	21.6	21.2	21.2	21.2	21.2	21.2	20.8	20.8	20.5	20.5	20.1	19.6	19.4	18	16.1		12
14		17.6	17.6	17.6	17.4	17.1	17.1	17.1	17.1	16.9	16.7	16.4	16.4	16	15.8	15.2	12.4	14
16			14.9	14.6	14.6	14.6	14.5	14.2	14.2	14.2	14.2	13.9	13.8	13.5	13.4	13.1	11.7	16
18				12.7	12.7	12.4	12.4	12.4	12.1	12.1	12.1	12	11.7	11.5	11.4	11.1	10.6	18
20				11	11	10.9	10.9	10.6	10.6	10.6	10.4	10.3	10.2	9.9	9.8	9.6	9.2	20
22					9.7	9.6	9.5	9.5	9.4	9.2	9.2	9	8.9	8.8	8.6	8.4	8.1	22
24						8.6	8.5	8.4	8.4	8.1	8.1	7.9	7.9	7.8	7.7	7.5	7.2	24
26							7.7	7.5	7.5	7.3	7.2	7.1	7	6.8	6.7	6.5	6.5	26
28							6.8	6.8	6.7	6.5	6.5	6.4	6.3	6.1	6.1	6	5.9	28
30								6.1	6.1	6	5.9	5.7	5.7	5.6	5.4	5.3	5.2	30
32									5.6	5.4	5.3	5.2	5.2	5	4.9	4.7	4.7	32
34										5	4.9	4.7	4.6	4.5	4.5	4.3	4.2	34
36										4.5	4.5	4.3	4.2	4	4	3.9	3.8	36
38											3.9	3.9	3.8	3.6	3.5	3.4	3.4	38
40												3.6	3.5	3.4	3.3	3.2	3.1	40
42													3.2	3.1	3	2.9	2.8	42
44														2.8	2.8	2.6	2.5	44
46														2.6	2.5	2.4	2.2	46
48															2.2	2.1	2	48
50																1.9	1.8	50
52																	1.6	52
54																	1.4	54



ZOOMLION

Crawler Crane

ZCC1000V-1E5

-  100t
-  13~61m
-  49m +19m

Max. lifting moment

412 t·m

Engine rated power

209 kW

Rear counterweight

32 t

Central ballast

11 t

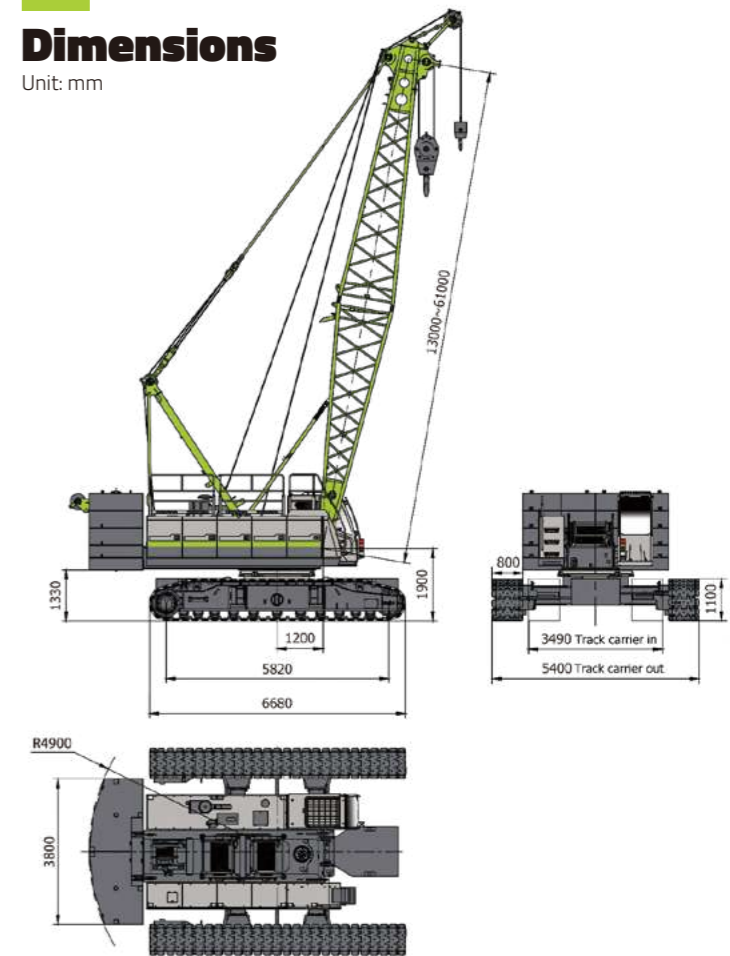


Technical Advantages

- Suitable for wind power auxiliary hoisting: Main boom 22m, 65.6t@6m, 78.0t@5m
- Suitable for trestle construction: Main boom 31m, 42.3t@8m
- Maximum lifting speed 140m/min, maximum slewing speed 2.5rpm
- High-speed follow-up of the joystick with a control response time of 0.7s. Equipped with a 9-piston motor, featuring a micro-movement speed of 2m/min under rated load.
- 5.4m vehicle width, 4.9m rear slewing radius, enabling better adaptation to construction in narrow spaces
- Track fully retracted outer width 3.49m, with the entire configured set transportable via only 2 trailer.
- Equipped with graded counterweight function to meet different load-bearing capacities, ensuring unrestricted trestle construction.
- Versatile compatibility: Fixed jib and struts are compatible with the 85-ton class.

Dimensions

Unit: mm



Rated Capacity Chart

Rear counterweight 32t Central ballast 11t (Unit: t)





Lifting Height m	Lifting Capacity (t)																Lifting Height m	
	13	16	19	22	25	28	31	34	37	40	43	46	49	52	55	58		61
3.9	100																	3.9
5	81	80	80	78														5
6	68.6	68.2	67.3	65.6	63.9	61.5												6
7	54.9	54.8	54.4	54	52	50.7	49.7											7
8	44.9	44.8	44.7	44.6	44.2	43.5	42.3	41.1	40.3									8
9	37.9	37.8	37.7	37.7	37.6	37.2	37	35.9	35.3	34.4	33.3							9
10	32.8	32.6	32.6	32.5	32.4	32.3	32.2	32	31.4	30.8	30.2	29.4	28.4					10
11	28.9	28.7	28.6	28.6	28.4	28.4	28.3	28.1	28.1	27.7	27.1	26.5	26	24.4				11
12	25.7	25.6	25.5	25.4	25.3	25.2	25.1	25	24.9	24.6	24.5	24.1	23	23.3	21	18.5		12
14		21	20.8	20.8	20.6	20.5	20.4	20.3	20.2	20.1	20	20	19.6	19.2	18.5	17	16	14
16			17.5	17.5	17.3	17.2	17.1	17	16.9	16.8	16.7	16.7	16.2	16.4	15.9	15.5	15	16
18				15	14.9	14.8	14.7	14.6	14.4	14.3	14.2	14.2	14.1	13.8	13.6	13.3	12.9	18
20				13.1	13	12.9	12.7	12.7	12.5	12.4	12.3	12.3	12.2	12.1	11.8	11.6	11.3	20
22					11.5	11.4	11.2	11.1	11	10.9	10.8	10.8	10.7	10.5	10.4	10.3	10	22
24							10.1	10	9.9	9.8	9.7	9.5	9.5	9.4	9.2	9.2	8.9	24
26								9	8.9	8.7	8.6	8.5	8.5	8.4	8.3	8.1	8	26
28								8.1	7.9	7.9	7.8	7.6	7.6	7.5	7.4	7.3	7.2	28
30									7.3	7.1	7	6.9	6.9	6.8	6.6	6.5	6.4	30
32										6.5	6.4	6.2	6.2	6	5.9	5.8	5.7	32
34											5.8	5.7	5.7	5.5	5.3	5.1	5.1	34
36											5.3	5.2	5.2	5	4.8	4.8	4.6	36
38												4.7	4.6	4.5	4.3	4.3	4.2	38
40													4.2	4.1	3.9	3.9	3.8	40
42													4.3	3.8	3.7	3.6	3.4	42
44															3.4	3.3	3.1	44
46															3.1	3	2.8	46
48																2.7	2.5	48
50																2.3	2.3	50
52																	2.1	52
54																	1.9	54



ZOOMLION

Crawler Crane

ZCC1500AE5

-  150t
-  16~82m
-  61m +31m
-  55m +46m / 52m +55m

Max. lifting moment

870 t·m

Engine rated power

246 kW

Rear counterweight

60 t

Central ballast

20 t

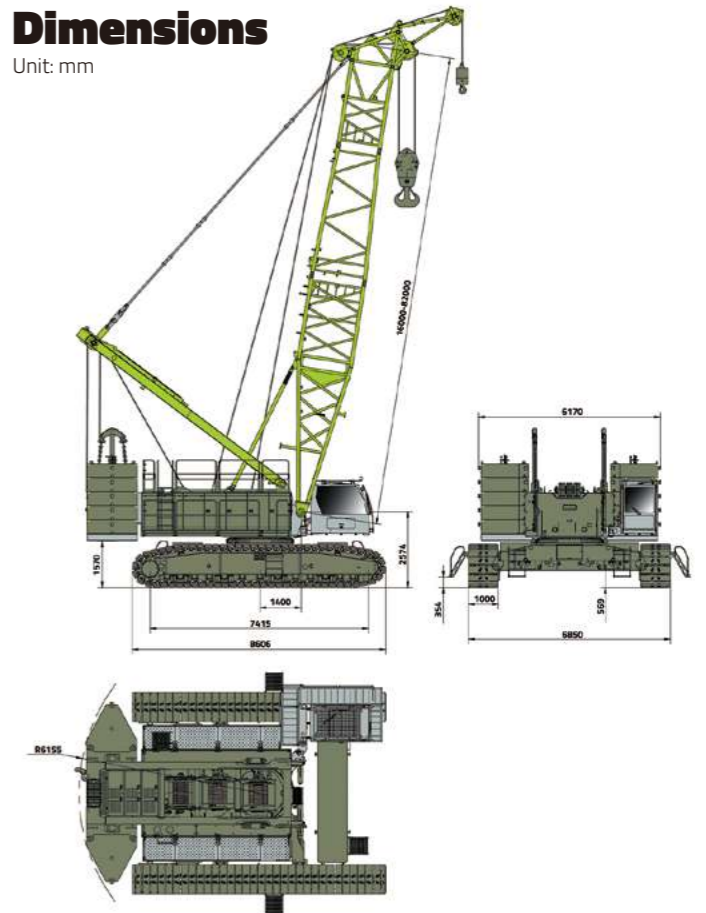


Technical Advantages

- It operates in 8 working constructions and can be equipped with a lightweight luffing jib, achieving a maximum lifting height of 125m and a maximum working radius of 84m.
- Optional crawler tracks with real-time tensioning for superior adaptability to poor ground conditions.
- Optional load-controlled free-fall hook operation mode, meeting diverse operational requirements.
- A maximum swing radius of < 6.2m, combined with a virtual swing wall and video monitoring system, ensures safe operation in confined spaces.
- The entire machine features full self-assembly and self-dismantling capabilities, with one-key mast raising and one-key winch rope threading.
- The chassis adopts a full-platform layout, and the superstructure passage is fully protected by guardrails, providing comprehensive personal safety guarantees.
- The standard sections come in a three-layer nesting design, effectively reducing transport volume, while the boom sections are stackable for storage and transport, minimizing the required footprint.

Dimensions

Unit: mm



Note: The dimensions related to the track frame shown in the diagram are based on crawler tracks; certain dimensions may vary when non-crawler tracks are selected.

Rated Capacity Chart

Rear counterweight 60t Central ballast 20t (Unit: t) ***The intermedite tensioner must be used while the main boom length exceeds 70m.*

Lifting height m	Main boom length (m)																				Lifting height m			
	16	19	22	25	28	31	34	37	40	43	46	49	52	55	58	61	64	67	70	73		76	79	82
5	150*	132*	127	115	112														**	**	**	**	**	5
6	145*	130	125	111	110	102	98.3	89.2																6
7	124	124	122	111	108	99.6	96.6	87.5	83.8	75.7	70.4	63.7												7
8	108	108	106	105	104	97.9	94.4	85.6	81.9	74.3	70.1	63.7	60.7	54.6	51.4	46.7								8
9	94	93.2	91.9	91	90	88.3	85.8	80.7	78.9	73	68.8	62.2	59.5	53.2	50.4	45.6	41	36.9	33.3	30.1				9
10	79.7	80.1	80.3	79.9	79	78.2	76.3	74.6	72.7	70.5	66.9	60.3	58	51.8	49.1	44.5	40.2	36.3	32.6	29.4	26.6	22.6	20.5	10
11	69.1	69.4	69.6	69.7	69.8	69.6	68.6	67	65.6	64.1	62.6	58.5	56.2	50.4	47.8	43.5	39.5	35.5	32	28.8	26.1	22.2	20.1	11
12	60.8	61.1	61.3	61.4	61.4	61.5	61.4	60.9	59.5	58.3	57	55.9	54.6	49.1	46.5	42.4	38.7	34.8	31.3	28.2	25.5	21.7	19.6	12
13	54.1	54.4	54.6	54.7	54.8	54.7	54.8	54.5	53.4	52.3	51.3	50.3	47.8	45.3	41.4	37.8	34.1	30.6	27.6	25	21.3	19.2	13	
14	48.7	49	49.2	49.3	49.3	49.3	49.3	49.3	49.2	49.2	48.2	47.4	46.4	45.5	44.1	40.5	37	33.4	30	27	24.4	20.8	18.8	14
15	44.1	44.4	44.6	44.8	44.8	44.8	44.7	44.8	44.7	44.6	44.5	43.9	43	42.3	41.4	39.5	36.2	32.7	29.4	26.4	23.9	20.3	18.3	15
16	40.2	40.6	40.8	40.9	40.9	40.9	40.9	40.9	40.8	40.8	40.6	40.6	40.1	39.4	38.5	38	35.3	32	28.7	25.8	23.3	19.9	17.9	16
17	36.7	37.3	37.5	37.6	37.6	37.6	37.6	37.6	37.4	37.3	37.3	37.2	36.8	36	35.5	33.7	30.2	28.2	25.2	22.7	19.4	17.5	17	
18		34.4	34.6	34.8	34.8	34.8	34.7	34.8	34.7	34.6	34.5	34.4	34.3	34.2	33.8	33.3	31.6	28.4	27.6	24.7	22.3	19	17.1	18
19		31.8	32.1	32.2	32.3	32.3	32.2	32.3	32.1	32.1	31.9	31.9	31.8	31.7	31.5	31.3	29.7	26.8	27	24.2	21.8	18.6	16.7	19
20		29.5	29.8	30	30	30.1	30	30	29.9	29.9	29.7	29.7	29.6	29.5	29.3	29.3	27.8	25.1	26.4	23.7	21.3	18.2	16.3	20
22			26	26.3	26.3	26.3	26.3	26.2	26.1	26	26	25.8	25.7	25.5	25.5	24.6	22.3	25	22.6	20.4	17.4	15.6	22	
24				23.2	23.3	23.3	23.2	23.3	23.2	23.1	23	22.9	22.8	22.7	22.5	22.5	21.9	19.7	22.2	21.7	19.5	16.6	14.9	24
26					20.7	20.8	20.7	20.8	20.7	20.6	20.5	20.4	20.3	20.2	20	20	19.6	17.6	19.7	19.5	18.6	15.9	14.2	26
28					18.5	18.7	18.6	18.7	18.6	18.5	18.4	18.3	18.2	18.1	17.9	17.8	17.6	15.6	17.5	17.4	17	15.2	13.6	28
30						16.8	16.9	16.8	16.7	16.6	16.5	16.4	16.3	16.1	16	15.8	13.9	15.7	15.6	15.5	14.6	12.9	30	
32						15.2	15.3	15.2	15.1	15	15	14.8	14.7	14.5	14.5	14.2	12.4	14.2	14	14	13.6	12.4	32	
34						13.8	13.9	13.8	13.8	13.6	13.6	13.5	13.4	13.2	13.1	12.8	11	12.8	12.7	12.6	12.3	11.5	34	
36							12.7	12.6	12.6	12.5	12.4	12.3	12.2	12	11.9	11.5	9.8	11.6	11.5	11.3	11.2	10.4	36	
38								11.6	11.5	11.4	11.4	11.2	11.1	10.9	10.9	10.3	8.7	10.6	10.4	10	10.2	9.4	38	
40								10.6	10.6	10.4	10.4	10.3	10.2	10	9.9	9.3	7.7	9.6	9.5	8.9	9.2	8.5	40	
42									9.7	9.6	9.6	9.4	9.3	9.1	9.1	8.4	6.8	8.8	8.6	7.9	8.3	7.7	42	
44										8.8	8.8	8.6	8.5	8.4	8.3	7.4	5.9	8	7.9	6.8	7.3	7	44	
46										8	8	7.9	7.8	7.7	7.6	6.7	5.2	7.3	7.2	5.9	6.4	6.2	46	
48											7.4	7.3	7.2	7	7	5.9	4.4	6.7	6.5	5.1	5.6	5.3	48	
50												6.7	6.6	6.4	6.4	5.3	3.8	5.9	6	4.2	4.7	4.5	50	
52													6.1	5.9	5.9	4.6	3.1	5.2	5.4	3.4	3.9	3.8	52	
54														5.5	5.4	5.4	4	2.5	4.5	4.9	2.6	3.2	54	
56															4.9	4.9	3.5	2	3.8	4.5	1.9	2.4	56	
58																4.5	2.9	1.5	3.1	3.9	1.2	1.8	58	
60																	2.4	1	2.5	3.3	1.2	1	60	
62																			2	2.7			62	
64																				1.4	2.1		64	
66																					1.5			66





Note: the lifting capacity marked with *:counterweight 50t, central ballast 20t



ZOOMLION

Crawler Crane

ZCC2200AE5

-  220t
-  16~85m
-  61m +31m / 70m +13m
-  55m +52m

Max. lifting moment

1250 t·m

Engine rated power

246 kW /2000rpm

Rear counterweight

60/72/84 t

Central ballast

28 t

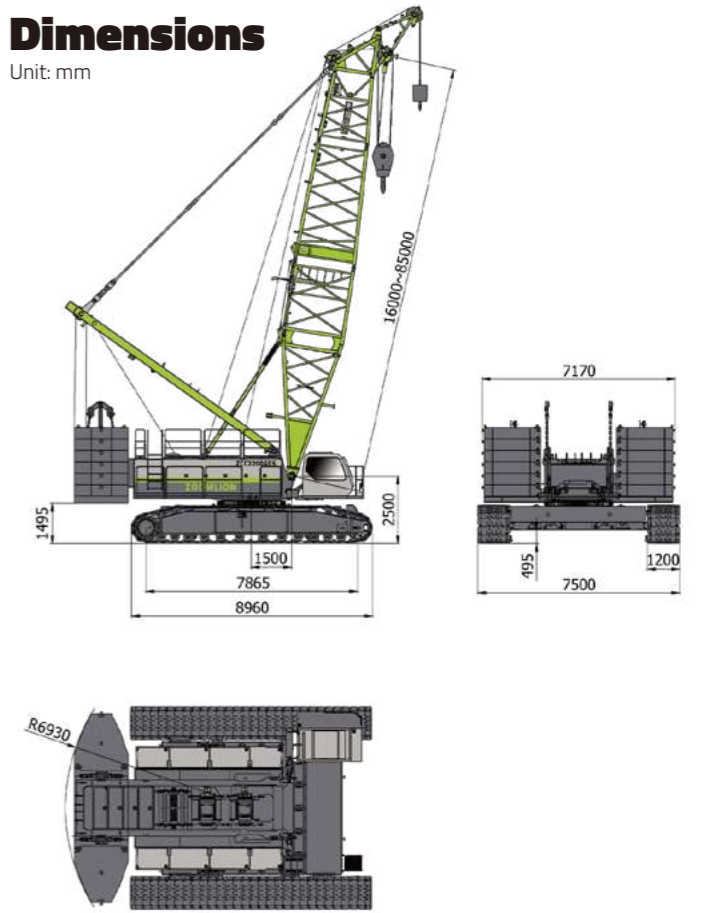


Technical Advantages

- Industry-leading comprehensive lifting performance: rebar cage hoisting: H55m@10m Q=85.5t; steel structure hoisting: LJ49+34m@30m Q=27.8t.
- Optional load-controlled free-fall hook operation mode, meeting diverse operational requirements.
- The main boom and luffing jib modes adopt a multi-level counterweight design based on boom weight, allowing zero-counterweight operation under S mode for better adaptability to lifting on soft ground.
- Equipped with efficient auxiliary operation modes such as one-key mast raising, one-key winch rope threading, and hoisting winch follow-up.
- Integrated design of the main boom and jib, with 26% fewer boom sections required for full configuration, minimizing the idle rate of boom sections.
- Equipped with the integrated key panel, a tri-adjustable air-suspension seat, and a separate electric armrest.
- Operational safety and reliability are ensured by an automatic identification and alarm, a spatial virtual wall for operation range limitation, and real-time wind speed warning.

Dimensions

Unit: mm



Rated Capacity Chart

Rear counterweight: 60t Central ballast: 28t Unit: t

⚡ m	16	19	22	25	28	31	34	37	40	43	46	49	⚡ m
4.5	220												4.5
5	205	190											5
6	190	185	181	174									6
7	162.5	160.5	158.9	156.2	151	145.8	140.5						7
8	139.3	139.3	137.3	132.7	128.2	124.4	120.4	116.5	112.9	109.9			8
9	114.3	114.5	114.7	114.2	111.1	108.2	105	102	99.2	96.7	94.2	91.6	9
10	96.6	96.8	96.9	97	96.9	95.6	93.1	90.7	88.1	86.2	84.1	82	10
11	83.4	83.6	83.8	83.8	83.7	83.9	83.1	81.4	79.2	77.6	75.9	74	11
12	73.3	73.5	73.6	73.6	73.5	73.7	73.6	73.1	71.9	70.5	69	67.4	12
14	58.6	58.8	58.9	58.9	58.8	59	58.9	58.8	58.5	58.5	57.8	56.9	14
16		48.7	48.9	48.8	48.7	48.9	48.8	48.7	48.4	48.5	48.4	48.1	16
18			41.5	41.5	41.4	41.5	41.4	41.3	41	41.1	41	40.8	18
20				35.8	35.8	35.9	35.8	35.7	35.4	35.5	35.4	35.2	20
22					31.3	31.5	31.4	31.2	31	31.1	30.9	30.7	22
24					27.7	27.9	27.8	27.6	27.4	27.5	27.3	27.1	24
26						24.9	24.9	24.7	24.4	24.5	24.4	24.2	26
28							22.4	22.2	22	22	21.9	21.7	28
30								20.1	19.8	19.9	19.8	19.6	30
32									18	18.1	18	17.8	32
34									16.4	16.5	16.4	16.2	34
36										15.1	15	14.8	36
38											13.7	13.5	38
40												11.8	40



ZOOMLION

Crawler Crane

ZCC2800AE5



280t



21~93m



72m +28m / 66m +40m



66m +36m / 60m +66m

Max. lifting moment

1500 t·m

Engine rated power

336 kW

Rear counterweight

100 t

Central ballast

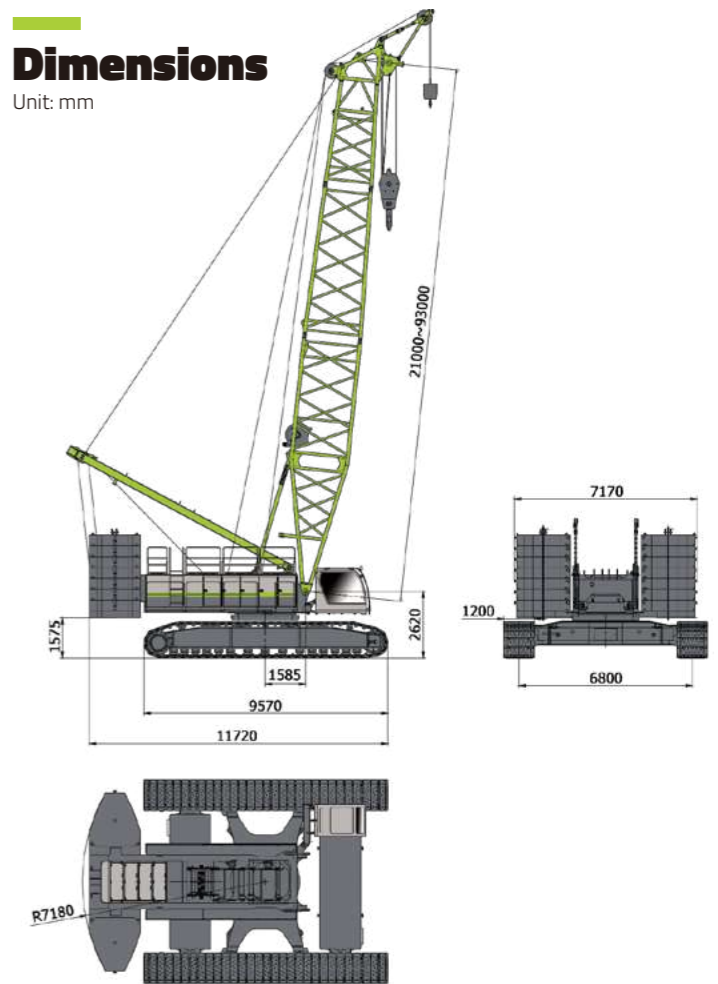
40 t

Technical Advantages

- High-power engine, one pump per mechanism, pump-valve coordinated dual control, and high efficiency in compound actions.
- Adaptive winch follow-up technology increases the efficiency of medium-load hoisting operations by 30%.
- Panoramic operation environment monitoring with automatic personnel identification and alarm; spatial virtual wall to realize operation range restriction.
- Equipped with wireless remote control function to enable convenient single-person outdoor operation of the entire machine's actions.
- Left and right joystick controls are customizable for personalized operation. The machine offers synchronous travel via a single joystick and automatic forward traveling.
- 1.25m new-generation operator's cab, featuring seat intelligent identification + joystick lever identification and dual mechanism function locks.
- 15.6-inch dual-link LCD screen + integrated key panel, with a brand-new UI design for excellent human-machine interaction.

Dimensions

Unit: mm



Rated Capacity Chart

Rear counterweight: 100t Central ballast: 40t Unit: t




⚡ m	21	24	27	30	33	36	39	42	45	48	51	54	⚡ m
5	280												5
6	240	218	208	197									6
7	215	213	203	193	182	172	162						7
8	187	186	182	179	176	168	159	149	140	131			8
9	165	162	160	157	155	152	150	146	138	129	121	114	9
10	146	144	142	140	138	136	134	132	130	127	119	112	10
11	130	129	128	126	124	122	120	119	117	116	114	109	11
12	114	114	114	114	113	111	110	108	107	105	104	103	12
13	101	101	101	101	101	101	100	99.5	98.1	96.9	95.6	94.4	13
14	91.1	91.1	91.1	91.1	91	90.9	90.7	90.3	89.3	88.2	87.1	86.1	14
15	82.7	82.7	82.6	82.6	82.5	82.4	82.2	82.2	82	81.9	81	80.2	15
16	75.6	75.6	75.6	75.5	75.4	75.3	75.1	75.1	74.9	74.7	74.5	74	16
17	69.6	69.6	69.5	69.5	69.3	69.2	69	69	68.8	68.7	68.4	68.3	17
18	64.3	64.3	64.3	64.3	64.1	64	63.8	63.8	63.6	63.4	63.2	63.1	18
19	59.8	59.8	59.7	59.7	59.5	59.4	59.2	59.2	59	58.8	58.6	58.5	19
20	55.7	55.8	55.7	55.7	55.5	55.4	55.2	55.2	55	54.8	54.6	54.5	20
22		49	49	49	48.8	48.7	48.5	48.5	48.2	48.1	47.8	47.7	22
24			43.6	43.6	43.4	43.3	43.1	43	42.8	42.6	42.4	42.3	24
26				39.1	38.9	38.8	38.6	38.6	38.3	38.2	37.9	37.8	26
28				35.3	35.2	35.1	34.9	34.8	34.6	34.4	34.2	34.1	28
30					32	31.9	31.7	31.7	31.4	31.2	31	30.9	30
32						29.1	28.9	28.9	28.7	28.5	28.2	28.1	32
34							26.6	26.5	26.3	26.1	25.9	25.7	34
36								24.4	24.2	24	23.8	23.7	36
38								22.6	22.3	22.2	21.9	21.8	38
40									20.7	20.5	20.3	20.1	40
44											17.4	17.3	44
48												15	48



ZOOMLION

Crawler Crane

ZCC3500V-2E5

-  350t
-  24~84m
-  60m +66m

Max. lifting moment

2450 t·m

Engine rated power

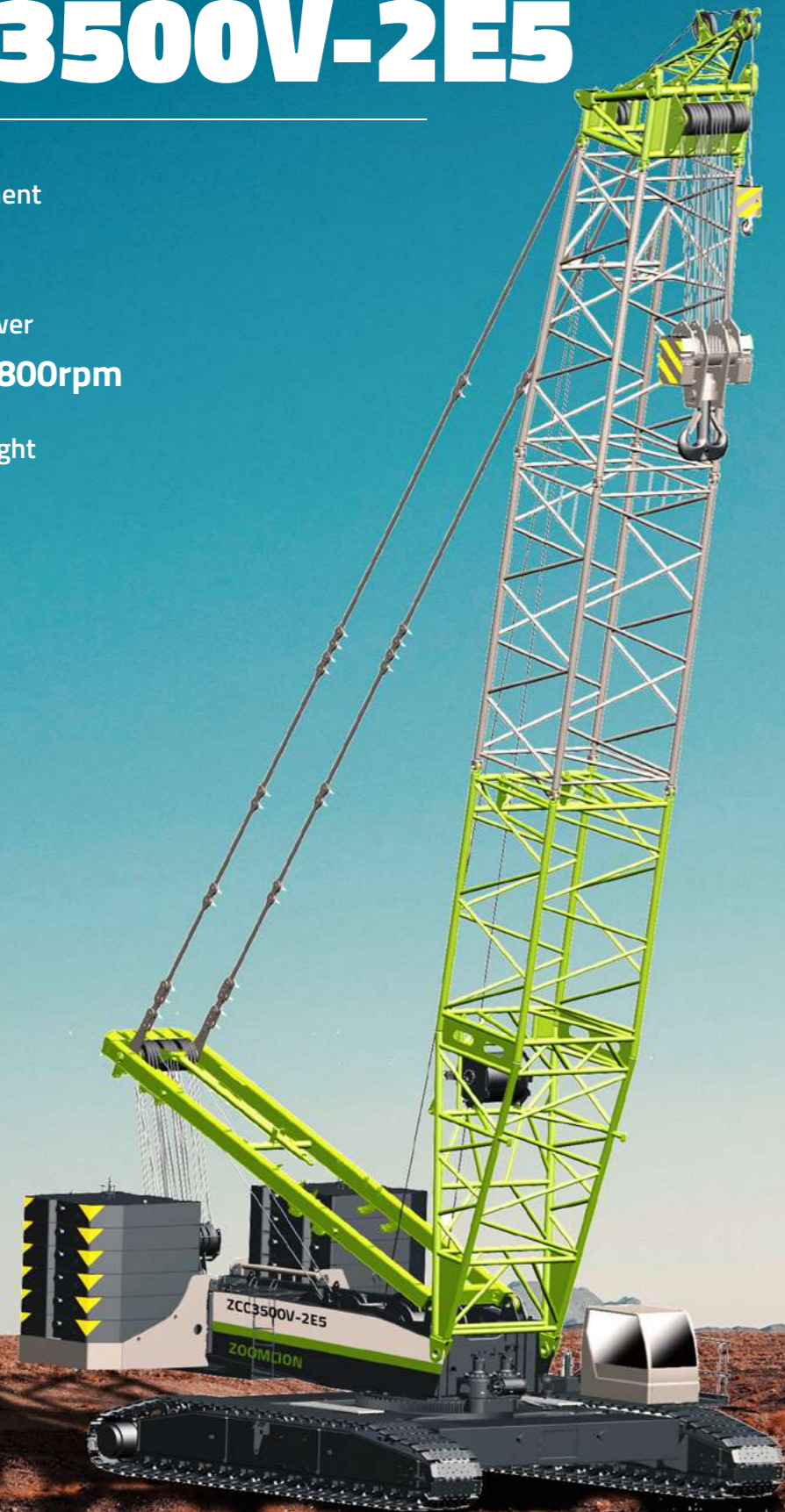
336 kW /1800rpm

Rear counterweight

150 t

Central ballast

40 t

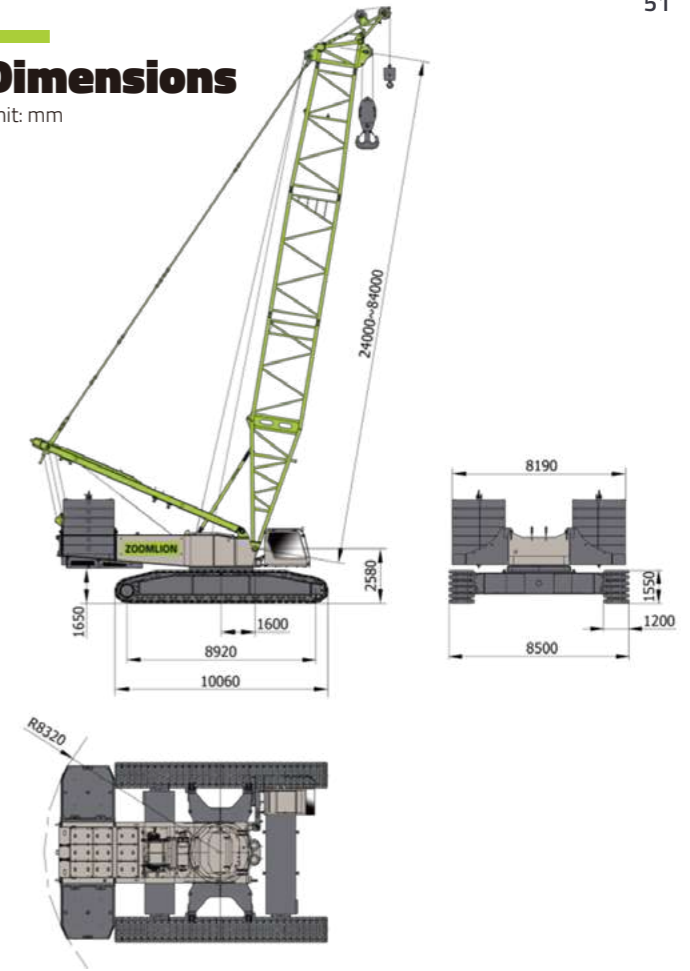


Technical Advantages

- Pioneers the industry's first additional counterweight shield tunneling hoisting mode among the same class cranes in the industry, enabling performance to surpass its class.
- Features a 3-level graded counterweight design (150/130/110t) for all working conditions, adaptable to different ground bearing capacities.
- Adopts an integrated hybrid boom design, significantly reducing procurement costs and boom section idleness.
- Standard boom sections support triple nested transportation and stacked storage, saving transportation and storage costs.
- Onboard real-time ground pressure display with 3-directional virtual wall setting to ensure safe operations.
- Equipped with a zoomable wireless HD camera at the boom head and a standard right-side camera.

Dimensions

Unit: mm



Rated Capacity Chart

Rear counterweight 130t Central ballast 40t

Unit: t

Reach (m)	24	30	36	42	48	54	60	66	72	78	84	Reach (m)
7	350											7
8	306	303	300									8
9	267	267	261	253	245							9
10	237	232	225	219	213	207						10
11	203	203	197	192	187	183	178					11
12	177	178	175	171	167	163	159	156	143			12
14	141	141	141	140	137	134	131	128	126	114	94	14
16	116	117	116	116	115	114	111	109	107	104	90.5	16
18	99.1	99.1	98.6	98.5	97.9	97.8	96.1	94.3	92.4	90.6	86.5	18
20	85.8	85.8	85.3	85.2	84.5	84.4	83.6	82.7	81.1	79.5	77.9	20
22	75.3	75.4	74.9	74.8	74.1	73.9	73.1	72.8	72	70.6	69.1	22
24		67	66.5	66.4	65.7	65.5	64.7	64.3	63.9	63.2	61.9	24
26		60.1	59.6	59.5	58.8	58.6	57.8	57.4	57	56.6	55.8	26
28		54.4	53.9	53.8	53.1	52.9	52	51.6	51.2	50.8	50.3	28
30			49	48.9	48.2	48	47.1	46.8	46.3	45.9	45.4	30
32			44.8	44.7	44	43.8	42.9	42.5	42.1	41.7	41.1	32
34				41.1	40.4	40.1	39.3	38.9	38.4	38	37.5	34
36				37.9	37.2	37	36.1	35.7	35.2	34.8	34.3	36
38				35	34.3	34.1	33.3	32.9	32.4	31.9	31.4	38
40					31.8	31.6	30.8	30.3	29.9	29.4	28.9	40
44						27.3	26.5	26.1	25.6	25.1	24.6	44
48						23.8	22.9	22.5	22	21.6	21.1	48
52							20	19.6	19.1	18.6	18.1	52
56								17.1	16.6	16.1	15.6	56
60									14.4	14	13.5	60
64									12.6	12.1	11.6	64
68										10.5	9.8	68
72											7.6	72



ZOOMLION

Crawler Crane

ZCC4000VE5

Max. lifting moment

5500 t·m

Engine rated power

336 kW

Rear counterweight




150 t

Central ballast

40 t

Counterweight (superlift)

230t

-  max 400t
-  36~96m
-  36m +9~12m
-  84m +24~84m

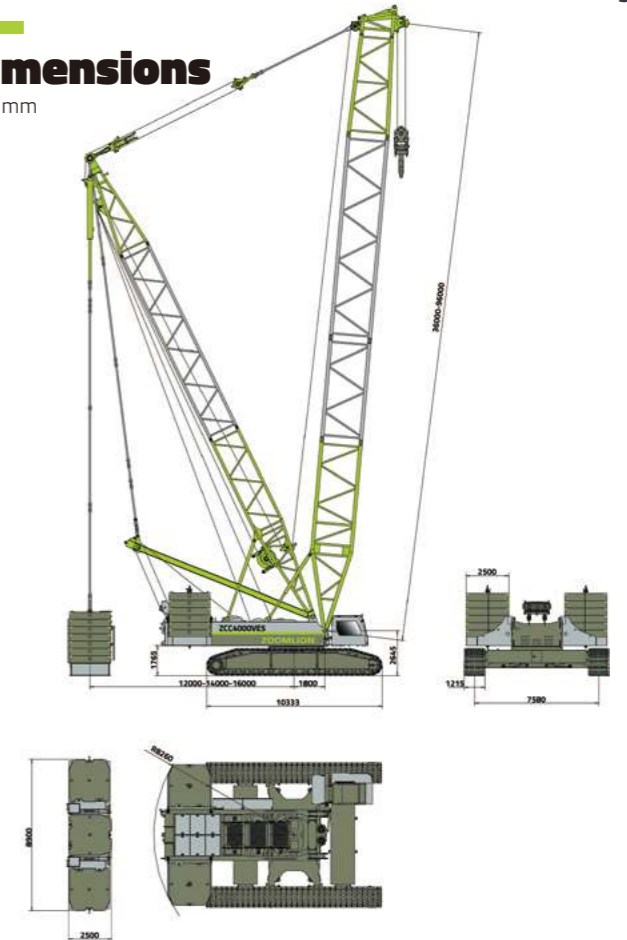


Technical Advantages

- Max. lifting moment 5500t·m (the highest in its class), with comprehensive lifting performance 2%~3% higher than competitors.
- Features the longest main boom (96m) among its same-class cranes, with 152t load at 20m working radius, meeting the needs of typical petrochemical hoisting scenarios.
- Innovative additional counterweight working condition can replace some superlift conditions for more efficient operations.
- Large-displacement pump-drive hoisting mechanism enables a maximum single-rope speed of 160m/min, ensuring fast hoisting.
- One-key rope reeving function, with coordinated control of hoisting, luffing, and rope reeving winches for efficient installation.
- Intelligent radius compensation technology keeps the radius within ±0.5m before and after the load is lifted off the ground, achieving precise positioning.
- 360° panoramic monitoring prevents collisions between the equipment and surrounding objects, ensuring operational safety.

Dimensions

Unit: mm



Rated Capacity Chart

Rear counterweight 150t Central ballast 40t

Unit: t



Radius (m)	24	30	36	42	48	54	60	66	72	78	84	Radius (m)
6	400	400										6
7	372	372	369	355								7
8	319	319	319	314	305	297						8
9	283	283	283	281	275	268	261	244				9
10	252	252	250	245	239	233	227	221	215			10
11	224	225	220	215	210	205	200	195	191	182	157	11
12	195	196	196	191	187	183	179	175	171	167	155	12
14	155	155	155	155	153	150	147	144	141	138	135	14
16	127	128	128	127	127	126	124	121	119	117	114	16
18	108	108	108	108	107	107	106	105	102	101	98.6	18
20	93.1	93.7	93.3	93.1	92.5	92.1	91.4	91.1	89.7	88.1	86.2	20
22	81.5	82.1	81.7	81.5	80.9	80.4	79.7	79.4	78.7	77.9	76.1	22
24		72.8	72.4	72.2	71.5	71	70.3	70	69.2	68.8	67.8	24
26		65.1	64.7	64.5	63.8	63.4	62.6	62.3	61.5	61.1	60.3	26
28		58.6	58.3	58.1	57.4	56.9	56.2	55.9	55	54.6	53.8	28
30			52.9	52.7	52	51.5	50.7	50.4	49.6	49.1	48.3	30
32			48.2	48	47.3	46.8	46	45.7	44.8	44.4	43.5	32
34				44	43.2	42.8	41.9	41.6	40.8	40.3	39.4	34
36				40.4	39.7	39.2	38.4	38.1	37.2	36.7	35.8	36
38				37.2	36.5	36.1	35.2	34.9	34	33.6	32.7	38
40					33.7	33.2	32.4	32.1	31.2	30.8	29.8	40
44					28.9	28.4	27.6	27.3	26.4	26	25	44
48						24.5	23.7	23.4	22.5	22	21.1	48
52							20.3	20.1	19.2	18.7	17.8	52
56								17.3	16.3	15.9	15	56
60									13.9	13.5	12.6	60
64									11.8	11.4	10.5	64
68										9.6	8.6	68
72											7	72



ZOOMLION

Crawler Crane

ZCC7200E5

-  600t
-  36~120m
-  84m +84m

Max. lifting moment

7200 t·m

Engine rated power

429 kW

Rear counterweight

230 t

Central ballast

60 t

Counterweight (superlift)

250t

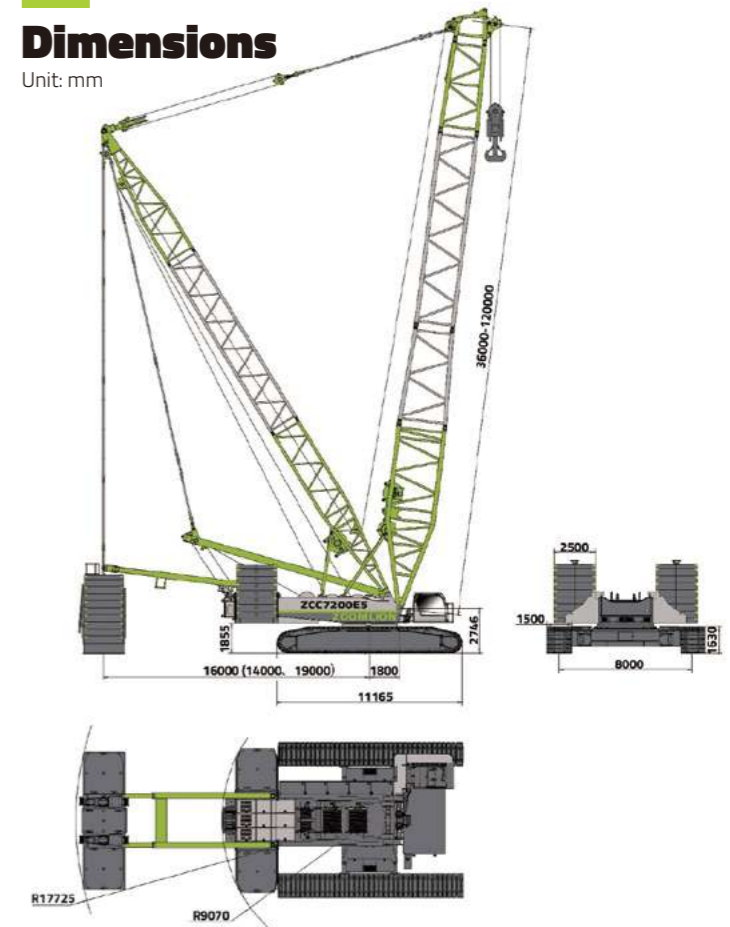


Technical Advantages

- Standard 66m + 72m luffing jib (the longest in its class), with standard working conditions meeting the lifting height required by superlift conditions of peer products.
- Swing radius < 10m under S mode, satisfying the construction requirements in narrow spaces.
- Winch speed adaptive load follow-up control technology increases lifting speed by 50%.
- Dual-pump confluence control technology improves luffing speed by 25%.
- One-key luffing mast lifting/lowering technology reduces the operation time by 60%, minimizes the number of operators, and enhances convenience.
- Intelligent remote control technology: Equipped with a full-vehicle remote controller, enabling a single operator to complete vehicle loading and operations independently, reducing the need for signalmen
- Suspended assembly/disassembly safety control technology: Detects the mast angle and pull plate force during suspended installation, restricts dangerous operations, and improves operational safety.

Dimensions

Unit: mm



Rated Capacity Chart

Rear counterweight 230t Central ballast 60t

Unit: t

⚡ m	48	54	60	66	72	78	84	⚡ m
8	458							8
9	402	389	357					9
10	358	347	334	319	295			10
11	322	312	302	289	277	263	254	11
12	292	284	275	264	253	244	234	12
13	267	260	253	243	234	225	216	13
14	246	240	233	224	216	208	200	14
15	228	222	216	209	201	194	187	15
16	211	206	201	194	187	181	175	16
17	193	192	188	182	176	169	164	17
18	177	177	176	171	165	159	154	18
19	164	163	163	161	155	150	145	19
20	152	152	151	151	147	142	137	20
22	133	132	132	131	130	127	123	22
24	118	117	116	116	114	114	111	24
26	105	104	104	103	102	101	99.7	26
28	94.9	94.1	93.6	92.7	91.4	90.4	89.1	28
30	86	85.2	84.7	83.7	82.4	81.5	80.1	30
32	78.4	77.6	77	76.1	74.8	73.8	72.4	32
34	71.8	71	70.4	69.5	68.2	67.1	65.7	34
36	66	65.2	64.7	63.7	62.4	61.3	59.9	36
38	60.9	60.1	59.6	58.6	57.2	56.2	54.8	38
40	56.3	55.5	55	54	52.7	51.6	50.2	40
44	48.6	47.8	47.3	46.3	44.9	43.9	42.4	44
48		41.4	40.9	40	38.6	37.5	36.1	48
52			35.6	34.7	33.3	32.3	30.8	52
56				30.2	28.8	27.8	26.3	56
60					25	23.9	22.4	60
64					21.6	20.5	19.1	64
68						17.6	16.1	68
72							13.5	72



ZOOMLION

Loader Crane

ZLK4200V603S

Max. rated lifting capacity
8.1t @ 4.4m

Max. rated lifting moment
356.4 kN·m

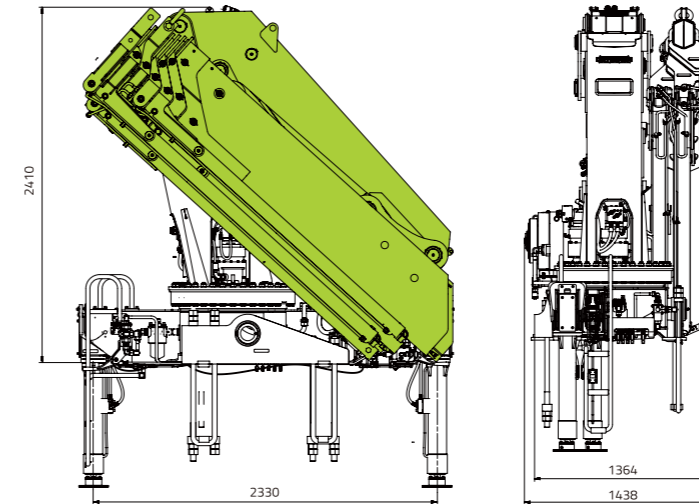
Max. working radius
16.6 m



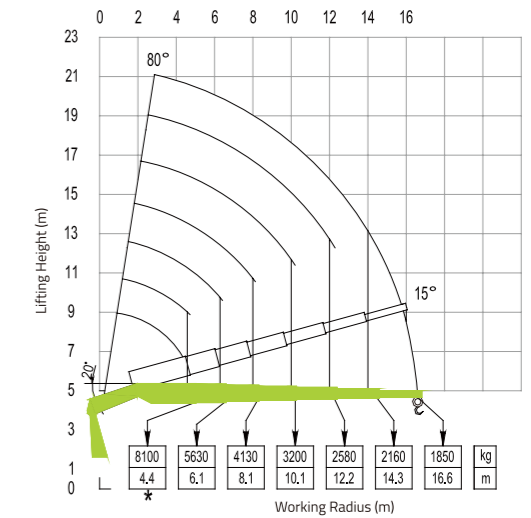
Technical Advantages

- Max. Lifting height up to 20.2m; Max. Rated lifting capacity up to 8.1 t.
- Hexagonal-shaped 7 sections boom, adopts 960 high-tensile steel.
- Two-stage outrigger spread 8m with high stability.

Dimensions



Lifting Height Chart



The lifting capacity shown in the chart is the crane's inherent rating as a stand-alone unit. This value is subject to change when mounted on different chassis due to overall vehicle stability.

Rated Capacity Chart

Working radius(m)	Lifting capacity (kg)
4.4	8100
6.1	5630
8.1	4130
10.1	3200
12.2	2580
14.3	2160
16.6	1850

Technical Data

Item	Value	Unit	Remarks
Max. lifting moment	356.4	kN·m	
Max. lifting height	20.2	m	
Max.outreach	16.6	m	
Max. boom extension time	36	s	1500rpm
Boom angle	-15~80	°	
The lifting speed of the 1st boom at rated flow	20	s	movement period from min. to max. angle of 1st boom
The lifting speed of the 2nd boom at rated flow	21	s	movement period from min. to max. angle of 2nd boom
Slewing angle	360 continual	°	
Slewing speed	2.5	rpm	
Rated flow, hydraulic system	55~80	L/min	
Rated pressure, hydraulic system	31	MPa	
Capacity of hydraulic oil tank	240	L	
Stabilizer spread	2520~8000	mm	
Overall dimensions(LxWxH)	1520x2550x2520	mm	
Weight of crane	5500	kg	Only the weight of crane



ZOOMLION

Loader Crane

ZLK5200V803-2S

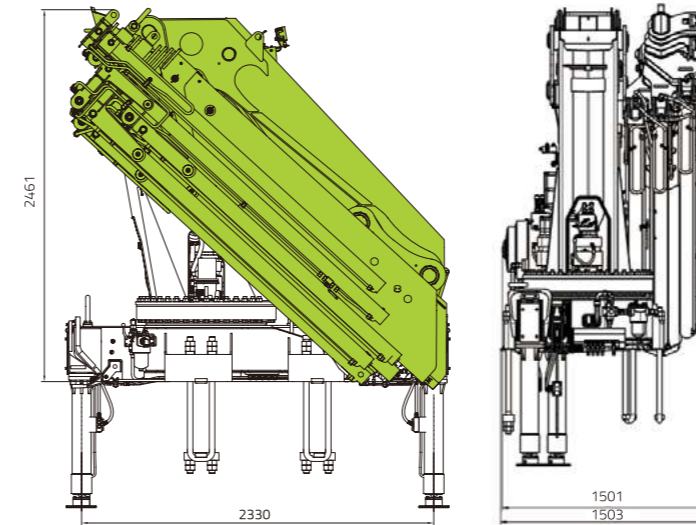
Max. rated lifting capacity **10.04t @ 4.58m** Max. rated lifting moment **450 kN·m** Max. working radius **21.15 m**



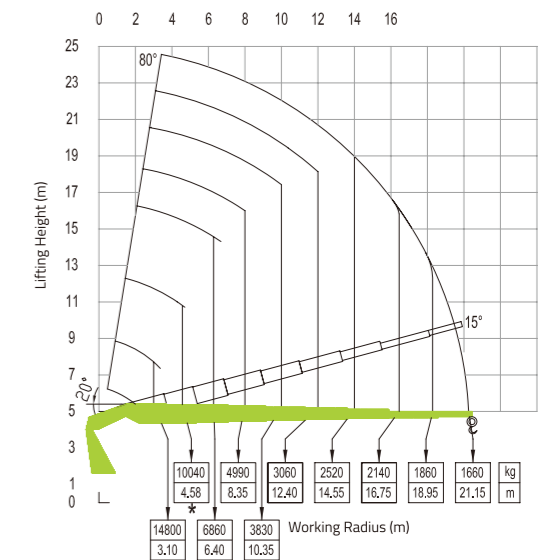
Technical Advantages

- Max. Lifting height up to 24.35m; Max. Rated lifting capacity up to 10.04 t.
- Hexagonal-shaped 9 sections boom, adopts 960 high-tensile steel.
- Two-stage outrigger spread 8m with high stability.

Dimensions



Lifting Height Chart



The lifting capacity shown in the chart is the crane's inherent rating as a stand-alone unit. This value is subject to change when mounted on different chassis due to overall vehicle stability.

Rated Capacity Chart

Working radius(m)	Liftingcapacity (kg)
4.58	10040
6.40	6860
8.35	4990
10.35	3830
12.40	3060
14.55	2520
16.75	2140
18.95	1860
21.15	1660

Technical Data

Item	Value	Unit	Remarks
Max. lifting moment	450	kN·m	
Max. lifting height	24.35	m	
Max.outreach	21.15	m	
Boom length	4.58~21.15	m	
Boom extension time	65	s	850rpm
Boom angle	-15~80	°	
The lifting speed of the 1st boom at rated flow	36	s	movement period from min. to max. angle of 1st boom
The lifting speed of the 2nd boom at rated flow	42	s	movement period from min. to max. angle of 2nd boom
Slewing angle	360 continual	°	
Slewing speed	1.5	rpm	850rpm
Rated flow,hydraulic system	80~100	L/min	
Rated pressure, hydraulic system	37	Mpa	
Capacity of hydraulic oil tank	270	L	
Stabilizer spread	8000	mm	
Overall dimensions(LxWxH)	1490×2550×2430	mm	
Weight of crane	6350	kg	Only the weight of crane



ZOOMLION

Loader Crane

ZLK6200V803-2S

Max. rated lifting capacity

25t @ 2m

17t @ 3m

Max. rated lifting moment

519.4 kN·m

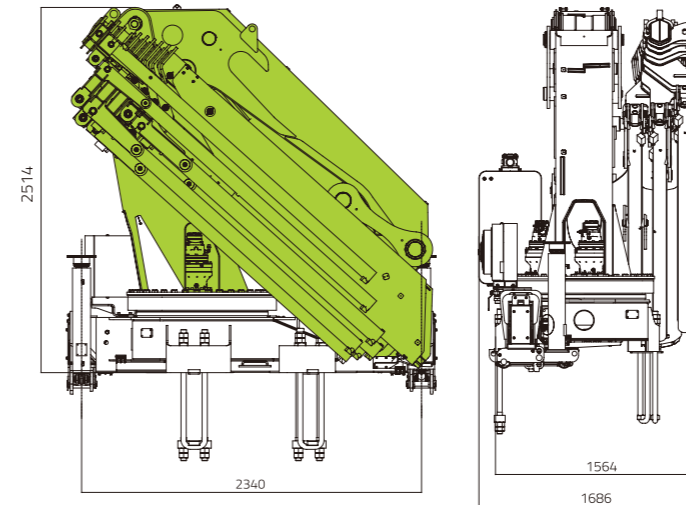
Max. working radius

20.9 m

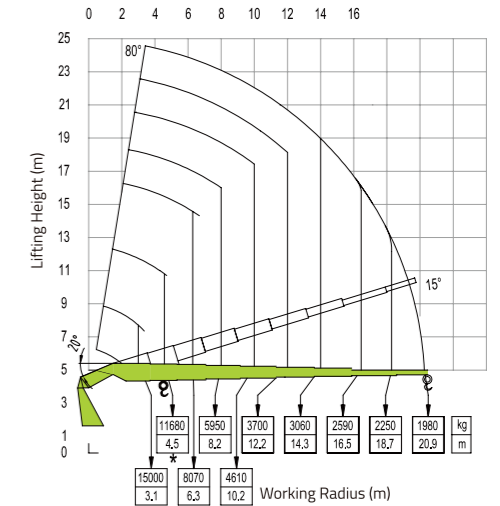
Technical Advantages

- Lifting performance is industry-leading with in the 50t-m range.
- 8-section telescopic boom extending up to 20.9m, crafted from high-strength 960 material with apolygonal boom sections for superior performance and lightweight design.
- Two-stage outrigger spread 8.6m with high stability.
- Standard integrated control system enabling functions such as start,stop,crane horn,lighting,and more,for convenient operation.

Dimensions



Lifting Height Chart



The lifting capacity shown in the chart is the crane's inherent rating as a stand-alone unit. This value is subject to change when mounted on different chassis due to overall vehicle stability.

Rated Capacity Chart

Working radius(m)	Liftingcapacity (kg)
4.5	11680
6.3	8070
8.2	5950
10.2	4610
12.2	3700
14.3	3060
16.5	2590
18.7	2250
20.9	1980

Technical Data

Item	Value	Unit	Remarks
Max. lifting moment	519.4	kN·m	
Max. lifting height	24.5	m	
Max.outreach	20.9	m	
Boom length	4.5~20.9	m	
Boom extension time	47	s	850rpm
Boom angle	-15~80	°	
The lifting speed of the 1st boom at rated flow	42	s	movement period from min. to max. angle of 1st boom
The lifting speed of the 2nd boom at rated flow	47	s	movement period from min. to max. angle of 2nd boom
Slewing angle	360 continual	°	
Slewing speed	1.6	rpm	850rpm
Rated flow,hydraulic system	80~100	L/min	
Rated pressure, hydraulic system	37	Mpa	
Capacity of hydraulic oil tank	278	L	
Stabilizer spread	8.6	mm	
Overall dimensions(LxWxH)	1750x2550x2522	mm	
Weight of crane	7200	kg	Only the weight of crane



ZOOMLION

Loader Crane

ZLK7600V803-2S

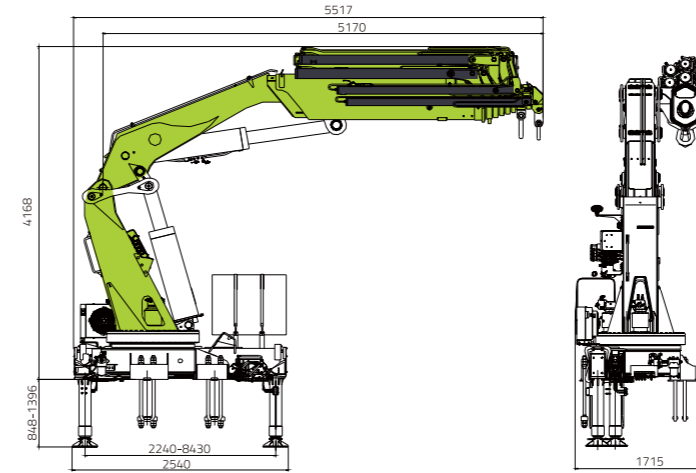
Max. rated lifting capacity **14.14t @ 4.65m** Max. rated lifting moment **650 kN·m** Max. working radius **20.45 m**



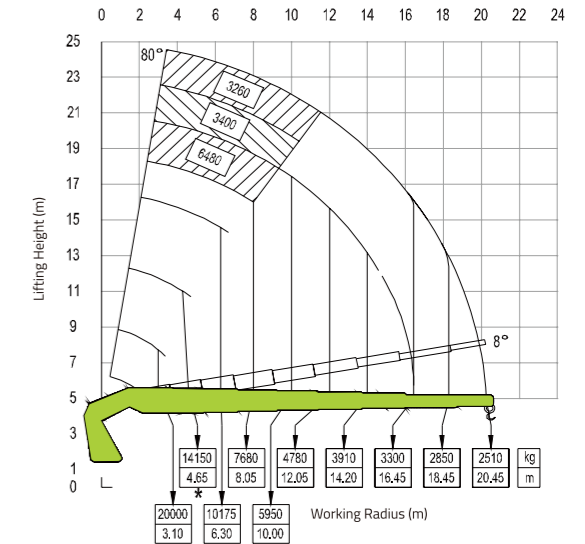
Technical Advantages

- Hexagonal-shaped 9 sections boom, adopts 960 high-tensile steel.
- Max. lifting torque 65t·m, meeting the lifting requirement of all working conaitons.
- Two-stage outrigger spread 8.43m with high stability.

Dimensions



Lifting Height Chart



The lifting capacity shown in the chart is the crane's inherent rating as a stand-alone unit. This value is subject to change when mounted on different chassis due to overall vehicle stability.

Rated Capacity Chart

Working radius(m)	Liftingcapacity (kg)
4.5	14140
6.3	10170
8.05	7670
10	5980
12.05	4785
14.2	3945
16.45	3265
18.45	2825
20.45	2505

Technical Data

Item	Value	Unit	Remarks
Max. lifting moment	650	kN·m	
Max. lifting height	24.5	m	
Max.outreach	20.45	m	
Boom length	5.3~21.1	m	
Boom extension time	105	s	850rpm
Boom angle	-15~80	°	
The lifting speed of the 1st boom at rated flow	46	s	movement period from min. to max. angle of 1st boom
The lifting speed of the 2nd boom at rated flow	49	s	movement period from min. to max. angle of 2nd boom
Slewing angle	360 continual	°	
Slewing speed	0.85	rpm	850rpm
Rated flow,hydraulic system	120	L/min	
Rated pressure, hydraulic system	35	Mpa	
Capacity of hydraulic oil tank	280	L	
Stabilizer spread	2240~8430	mm	
Overall dimensions(LxWxH)	1715x2540x2469	mm	
Weight of crane	8200	kg	Only the weight of crane

ZOOMLION

Loader Crane

ZLK8200V803-1S

Max. rated lifting capacity
15.38t @ 4.61m

Max. rated lifting moment
695 kN·m

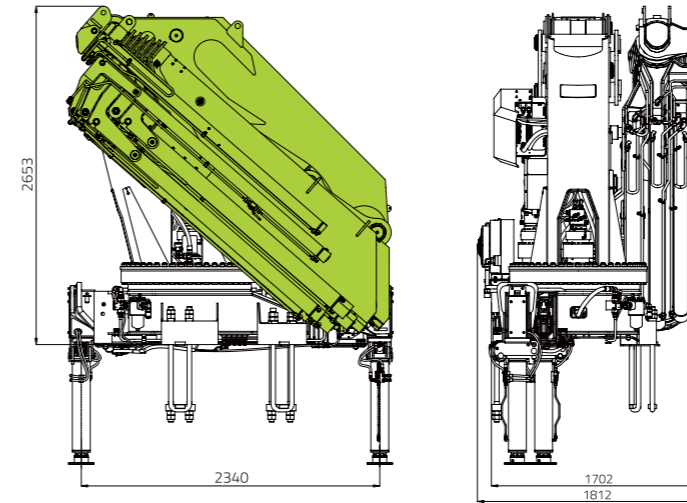
Max. working radius
20.6 m



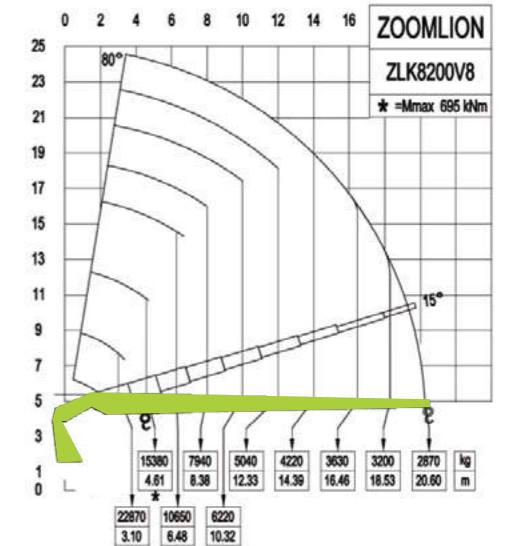
Technical Advantages

- The lifting capacity leads the industry among 70tm-class products.
- The 8-section telescopic boom achieves a working amplitude of 20.6m,utilizing Grade 960 high-strength steel for superior rigidity,lightweight performance,and proven manufacturing processes.
- The 86m double-stage telescopic outriggers with large-span configuration ensure enhanced operational stability.

Dimensions



Lifting Height Chart



The lifting capacity shown in the chart is the crane's inherent rating as a stand-alone unit. This value is subject to change when mounted on different chassis due to overall vehicle stability.

Rated Capacity Chart

Working radius(m)	Liftingcapacity (kg)
4.51	15380
6.48	10650
8.38	7940
10.32	6220
12.33	5040
14.39	4220
16.46	3630
18.53	3200
20.60	2870

Technical Data

Item	Value	Unit	Remarks
Max. lifting moment	695	kN·m	
Max. lifting height	24.7	m	
Max.outreach	20.6	m	
Boom length	4.8~20.6	m	
Boom extension time	75	s	1000rpm
Boom angle	-15~80	°	
The lifting speed of the 1st boom at rated flow	38	s	1000rpm
The lifting speed of the 2nd boom at rated flow	45	s	1000rpm
Slewing angle	360 continual	°	
Slewing speed	1.6	rpm	1000rpm
Rated flow,hydraulic system	80~100	L/min	
Rated pressure, hydraulic system	35	Mpa	
Capacity of hydraulic oil tank	415	L	
Stabilizer spread	8600	mm	
Overall dimensions(LxWxH)	1812x2550x2586	mm	
Weight of crane	8500	kg	Only the weight of crane



ZOOMLION

Truck-mounted Crane

ZLK6200V803-SA61

Max. rated lifting capacity

11.68t @ 4.5m

Max. rated lifting moment

519 kN·m

Max. working radius

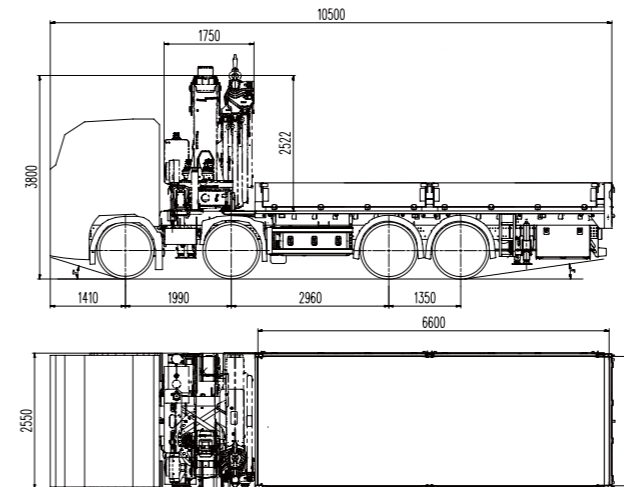
20.9 m



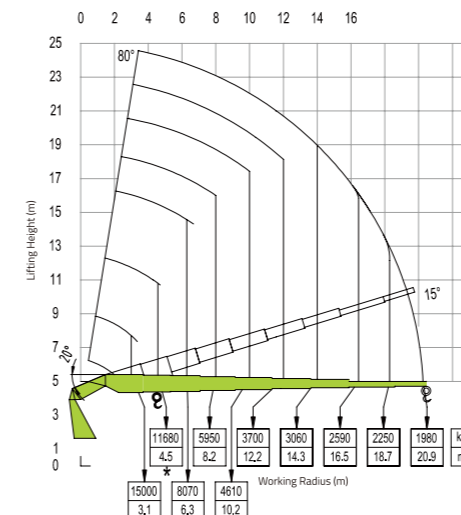
Technical Advantages

- With a total weight of 32t, the crane features a smaller turning radius, more reasonable axle load distribution, and more economical maintenance.
- Equipped with the 2.55m wide vehicle platform, 8.6m outrigger span, and 17° departure angle ensure stronger adaptability.
- Excellent lifting performance: 11.68t@4.5m, with a maximum radius working performance of 1.98t@20.9m and a maximum rated lifting moment of 519kN·m. Among products of the same class, its working radius and lifting capacity lead the industry.
- Spacious cargo box: 6600 × 2430 × 450mm dimensions, it boasts a industry-leading cargo capacity.
- Hydraulic system: Features a post-valve compensation proportional control system for excellent fine control and combined operation. Works with a regenerative telescopic valve for high efficiency. Also includes a new, stable, patented sequential telescopic cylinder, enabling strict sequential extension and minimal pressure loss.
- Standard integrated control panel, enables centralized management of engine start/stop, lighting, and auxiliary functions, streamlining operational workflows.

Dimensions



Lifting Height Chart



Vehicle Technical Data

Item	Unit	Value
Vehicle model	/	ZLK6200V803-SA61
Overall vehicle dimensions (L × W × H)	mm	10500×2550×3893
Complete vehicle mass	kg	32000
Complete vehicle kerb mass	kg	22300
Vehicle's rated cargo mass	kg	9550
Loader crane model	/	ZLK6200V8
Overall loader crane dimensions (L × W × H)	mm	1520×2550×2522
Loader crane weight	kg	7200
Chassis model	/	SCANIA P500
Overall cargo dimensions (L × W × H)	mm	6600×2430×450

Technical Data for Chassis

Item	Unit	Value
Axle load	kg	9000/9000/10500/10500
Max. driving speed	km/h	89
Max. gradeability	%	30
Front/rear overhang	mm	1410/2650
Wheelbase	mm	1990/2960/1350
Treads	mm	2177/1830/1830
Approach angle/Departure angle	°	17/8
Engine model	/	DC13 174
Displacement	L	12.742
Emission standard	/	Euro VI
Max. power	kW/rpm	368/1800
Max. torque	N.m/rpm	2650/1230
Front axle	/	AM622S
Drive axle	/	AD400SA
Transmission	/	G33CM
Dimensions of chassis frame	mm	270×90×(9.5+7)
Tire size	/	315/80 R22.5 150L/13
Driver's cab configuration	/	Low roof day driver's cab
Cab capacity	/	2 persons
Color of driver's cab	/	White

ZOOMLION

Truck-mounted Crane

ZLK7600V803-SA61

Max. rated lifting capacity
15.38t @ 4.61m

Max. rated lifting moment
695 kN·m

Max. working radius
20.6 m

Technical Advantages

- With a total weight of 32t, the crane features a smaller turning radius, more reasonable axle load distribution, and more economical maintenance.

- Equipped with the 2.55m wide vehicle platform, 8.42m outrigger span, ensure stronger adaptability!

- Maximum working radius: 20.45; maximum radius rated lifting capacity: 2.51t; maximum rated lifting moment: 650kN·m. Among products of the same class, its working radius and lifting capacity lead the industry.

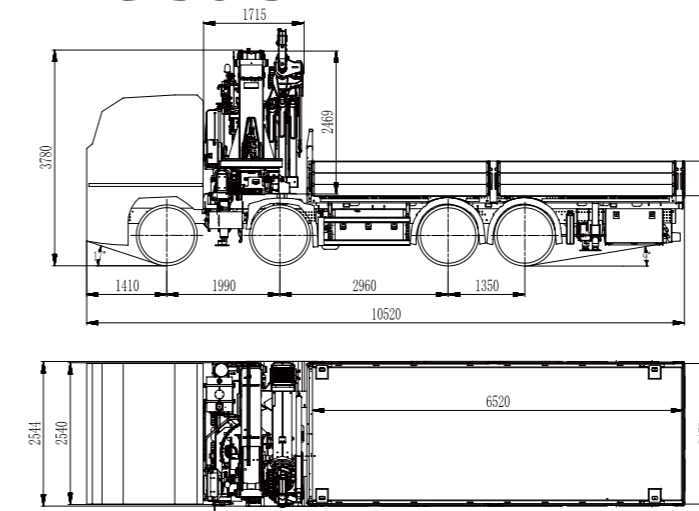
- Spacious cargo box: 6520×2470×600mm dimensions, it boasts a industry-leading cargo capacity.

- Standard integrated control panel, enables centralized management of engine start/stop, lighting, and auxiliary functions, streamlining operational workflows.

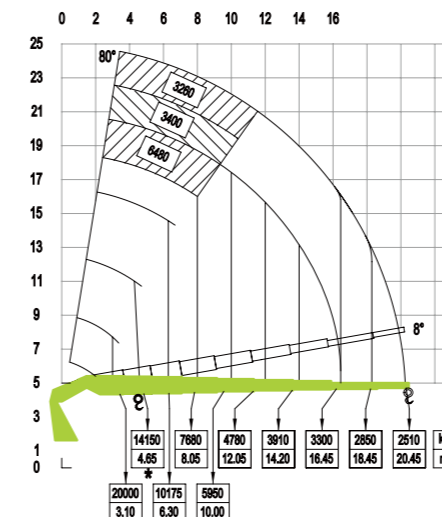
Vehicle Technical Data

Item	Unit	Value
Vehicle model	/	ZLK7600V803-SA61
Overall vehicle dimensions (L × W × H)	mm	10520×2544×3780
Complete vehicle mass	kg	32000
Complete vehicle kerb mass	kg	23150
Vehicle's rated cargo mass	kg	8700
Loader crane model	/	ZLK7600V8
Overall loader crane dimensions (L × W × H)	mm	1715×2540×2469
Loader crane weight	kg	8200
Chassis model	/	SCANIA P500 8x4
Overall cargo dimensions (L × W × H)	mm	6520×2470×600

Dimensions



Lifting Height Chart



Technical Data for Chassis

Item	Unit	Value
Axle load	kg	9000/9000/10500/10500
Max. driving speed	km/h	89
Max. gradeability	%	30
Front/rear overhang	mm	1410/2650
Wheelbase	mm	1990/2960/1350
Treads	mm	2177/1830
Approach angle/Departure angle	°	17 / 8
Engine model	/	Scania CV AB DC13 174
Displacement	L	12.742
Emission standard	/	Euro VI
Max. power	kW/rpm	367/1800
Max. torque	N.m/rpm	2650/900~1300
Front axle	/	Scania CV AB AM622S
Drive axle	/	Scania CV AB AD400SA
Transmission	/	Scania CV AB G33CM
Dimensions of chassis frame	mm	270×90×(9.5+7)
Tire size	/	1-2 axle: 385/65 R22.5 184K 3-4 axle: 315/80 R22.5 150L
Driver's cab configuration	/	Low roof day driver's cab
Cab capacity	/	2 persons
Color of driver's cab	/	White

ZOOMLION

Zoomlion Heavy Industry Science & Technology Co.,Ltd.

Copyright©2025 Zoomlion. All rights reserved. Reproduction and copying of any part of contents is not allowed for any purposes without Zoomlion's approval.



ZOOMLION
Crane



Zoomlion
MobileCrane



ZOOMLION
Crane



Zoomlion_
mobile crane

Product specifications are subject to change without notice and obligation. The photographs and/or drawing in this document are for illustrative purposes only. Please consult your local ZOOMLION dealer for more information.